



2022- 2024

Community
Health
Improvement
Plan



Prevent. Promote. Protect.

Table of Contents

Community Health Improvement Plan

Community Health Improvement Plan	3
Green County Health Priorities	4-7
Green County For More Information	8
Stephenson County Health Priorities	9
Stephenson County For More Information	10



2022-2024 Community Health Improvement Plan

SSM Health Monroe Hospital & Monroe Clinic Medical Group and Green County Public Health, are co-chairs of the Green County Healthy Community Coalition. Together with over 50 organizations we have completed a Community Health Needs Assessment (CHNA) and Community Health Improvement Plan (CHIP) as required by state and federal law. The Patient Protection and Affordable Care Act and IRS section 501(r) (3) direct tax exempt hospitals to conduct a Community Health Needs Assessment and develop an Improvement Plan every three years. Local health departments are required by Wisconsin Statutes Ch. 251.05 to conduct a community health needs assessment and develop a community health improvement plan (CHIP).

Green County health needs were prioritized by the Green County Healthy Community Coalition using the nominal voting method. A facilitated conversation regarding the number of health priorities the Coalition could effectively undertake was conducted. The Coalition came to a consensus to continue working on these three health priorities:

- ACEs - Adverse Childhood Experiences
- Housing
- Mental Health

The Green County Healthy Community Coalition has committed to address the health priority needs through allocation of resources, as outlined in our Community Health Improvement Plan (CHIP).

For more information on the Community Health Needs Assessment (CHNA) and updates visit the Green County Healthy Community Coalition at greencohcc.org.

Green County Health Priorities

1. Adverse Childhood Experiences (ACEs)

Group Name: Resilient Children, Families and Communities

Vision Statement:

Our vision is to break the cycle of adversity and trauma by building hope, resilience and growth for the children and families of Green County.

Goal #1:

Develop a centralized website dedicated to building knowledge, prevention and resources towards adverse childhood experiences by October 2022.

Objective 1a: Develop easily understood information related to what adverse childhood experiences are and why it is important we prevent them (the buy in) by July 2022.

Objective 1b: Gather already available resources in Green County that promote the prevention of adverse experiences and develop prosocial behavior for children and families by April 2023.

Objective 1c: Developing a website through the Green County Healthy Community Coalition by October 2022.

Objective 1d: Provide content for the social media platform related to adverse childhood experiences and resources as an ongoing task.

Objective 1e: Monitor how frequently the webpage is accessed and the Facebook insights as to the number of people content reaches and webpage accessed as an ongoing task.

Goal #2:

Identify at least one evidence-based resource for community members that provides direct education related to parenting, helping parents and youth handle stress, manage emotions, and tackle everyday challenges by March 2023.

Objective 2a: Research available community evidence-based resources already available in Green County by July 2022.

Objective 2b: Determine what community intervention or model fits our mission and vision for the Resilient Children, Families, and Community committee by December 2022.

Objective 2c: Identify a steering committee interested in the development of the chosen model by January 2023.

Objective 2d: Develop action steps to carry out the implementation of the identified resource by February 2023.

Objective 2e: Determine a general budget to access training resource and carry out the action steps for implementation by March 2023.

Green County Health Priorities

Adverse Childhood Experiences (ACEs) continued

Goal #3:

Increase public awareness by offering adverse childhood experiences education geared towards all levels of the community by April 2024.

Objective 3a: Research available tool kits and prevention recommendations for communities for the prevention of ACES and Positive Childhood Experiences (PCES) by January 2023.

Objective 3b: Develop goals and implementation steps for a public awareness campaign based on the tool kits and prevention recommendations by April 2023.

Local Resources:

ACEs: SSM Health Monroe Hospital, Green County Public Health, Green County Human Services, Avenues Counseling, United Way of Green County, Vitality Youth Services, Green County Child Advocacy Center, Southwest CAP, Green County Childcare Network, SW Behavioral Health Partnership, 4C, Union Presbyterian Church, Green County Foster Care Program, Local Schools, Southwest Behavioral Health Partnership.



Green County Health Priorities

2. Housing

Vision Statement:

Our committee will work to have available, affordable, accessible, and safe housing for all Green County residents, to build awareness of housing issues.

Goal #1:

Our group will create and distribute comprehensive resources for housing in Green County by December 2022.

Objective 1a: Determine best locations where resources need to be distributed.

Objective 1b: Will distribute 20 flyers/packets to determined locations.

Objective 1c: Determine how information should be published: Print, digital, social media and multilingual.

Goal #2:

Plan and host a Housing Summit with stakeholders by June 2023 in Green County.

Objective 2a: Determine format of summit and location by December 2022.

Objective 2b: Determine content and stakeholders by August 2022.

Objective 2c: Evaluate and create next steps after housing summit by August 2023.

Local Resources:

Housing: SSM Health Monroe Hospital, Green County Public Health, Monroe Chamber of Commerce, Green County Human Services, Green County Development Corporation, United Way of Green County, Family Promise, St. Vincent DePaul, Monroe Main Street, Green County Board of Supervisors, Green County Housing, Veterans Advocate, Housing Authority and Habitat for Humanity, Green County Sexual Assault Recovery Program, Better Brodhead.

Green County Health Priorities

3. Mental Health

Vision Statement:

Our focus is to build upon the existing foundations to expand and grow behavioral health resources in an inclusive and non-judgmental manner by educating, advocating for, and supporting everyone who lives, works, or learns in Green County.

Goal #1:

Mental Health Matters (MHM) will support and increase the awareness of the Substance Abuse and Mental Wellness Navigator position.

Objective 1a: MHM will share on many platforms the job posting to find a candidate. Upon hire, MHM will assist with the onboarding process for the candidate to be successful transitioning into the community. MHM will help the candidate connect with providers and resources. This will be measured by the candidate meeting 80% of identified providers and resources within four months of starting the position and consistently attending the MHM Committee Meetings.

Objective 1b: MHM will promote awareness in the community and increase with a grand re-opening and other media promotions. This will be measured by an increase in monthly data of those being connected and helped by the Navigator.

Goal #2:

MHM will increase mental health education, awareness, and outreach in Green County by June 2024.

Objective 2a: MHM has formed a subcommittee to develop a plan to increase awareness, resources, and issues to determine: a) the number of opportunities to develop, or b) the number of people we would like to reach in this goal. The subcommittee will complete this plan and present it at the July 2022 MHM Committee meeting.

Goal #3:

MHM will work on promotion and education to decrease binge drinking in Green County.

Objective 3a: MHM will formulate a subcommittee to work through a strategic framework process to identify the prevention priorities. This will be measured by the strategic process to be completed and presented at the September 2022 MHM Committee meeting.

Local Resources:

Mental Health: SSM Health Monroe Hospital, Green County Public Health, Green County Human Services, Extension-University of Wisconsin, Southwest Behavioral Health Partnership, Green County Sheriff, Brodhead Police Department, Better Brodhead, Aster Retirement Home, Colony Brands, Family Promise, FAITH, Green County Childcare Network, Avenue's Counseling, Vitality Youth Services, NAMI of Green County, SARP, SW CAP, Redemption Church, Medistar, Village Youth, Inc..

For More Information



Green County Healthy Community Coalition
greencohcc.org
Like us on Facebook



Green County Public Health
Prevent. Promote. Protect.

Green County Public Health
N3152 HWY-81
Monroe, WI 53566

608-328-9390
info@greencountywi.org



**SSM Health Monroe Hospital &
Monroe Clinic Medical Group**
515 22nd Avenue
Monroe, WI 53566

608-324-2000
ssmhealth.com

This report has been endorsed by SSM Health Monroe Hospital & Monroe Clinic Medical Group Board (approved March 23, 2022) and Green County Public Health Committee (approved April 13, 2022).



Healthy Community Coalition
of Stephenson County

2022- 2024

Stephenson County Community Health Improvement Plan



Stephenson County Health Priorities

1. Youth Health and Wellbeing

Vision Statement:

We will work towards a healthier community where youth has access to youth-friendly health care services, essential knowledge, resources and the support they need to grow into healthy adults.

Goal: To support, promote and educate to improve youth development and healthier outcomes by December 2024.

Objective 1a: By 2023 create website page for Healthy Community Coalition of Stephenson County to promote healthy community activities.

Objective 1b: Increase child participation in the Lincoln Douglas 5K and Fun Run to 40 students by 2024.

Objective 1c: Promote “Got Your Back” App to six local schools and parents as a resource for mental health, hand out 500 informational cards by December 2023.

Objective 1d: Offer Diabetic information and 2 classes per year at the FMFA Total Wellness Center/Barbershop for fathers, sons and families.

Objective 1e: Begin offering wellness exams and resource health fair for Hispanic students by June 2024.

Local Resources:

SSM Health Monroe Hospital, Freeport Ministers Fellowship Alliance, United Way of Northern Illinois, Stephenson County Public Health, FHN, University of Illinois-Extension, Norman Sleezer Home, Freeport School District, Boys and Girls Club of Stephenson County, Highland Community College.



For More Information



Healthy Community Coalition
of Stephenson County

**Healthy Community Coalition of
Stephenson County**



Stephenson County Public Health

10 W. Linden Street
Freeport, IL 61032

815-235-8271
Stephensoncountyil.gov



FHN

1045 W. Stephenson Street
Freeport, IL 61032

877-600-0346
Fhn.org



**SSM Health Monroe Hospital &
Monroe Clinic Medical Group**

515 22nd Avenue
Monroe, WI 53566

608-324-2000
ssmhealth.com

This report has been endorsed by SSM Health Monroe Hospital & Monroe Clinic Medical Group Board (approved March 23, 2022).

**All goals and objectives may be adjusted due to Covid-19 restrictions and the ability for community engagement.*



2021

Community Health Needs Assessment



Prevent. Promote. Protect.

Table of Contents

Community Health Needs Assessment (CHNA)

Message to Our Community	3
About SSM Health Monroe Hospital & Monroe Clinic Medical Group..	4
Our Community	5-6
The COVID-19 Pandemic & Our Community	7
What Makes a Community Healthy.....	8
Process for Green County.....	9
Green County Highlights	10
Green County Demographics	11
Green County Community by the Numbers.....	12-13
Green County Health Priorities	14
Appendices.....	15-21



Healthy Community Coalition of Stephenson County

Process for Stephenson County.....	24
Stephenson County Highlights	25
Stephenson County Geography	26
Stephenson County Demographics	27
Stephenson County Community by the Numbers.....	28
Stephenson County Health Priorities	29
Appendices.....	30-31



Message to Our Community

SSM Health Monroe Hospital & Monroe Clinic Medical Group has worked together with our various partners in Green and Stephenson Counties to define the 2022-2025 Community Health Needs Assessment (CHNA) and Community Health Improvement Plan (CHIP).

These efforts reflect the values inspired by SSM Health Monroe Hospital & Monroe Clinic Medical Group's founding physician leaders and religious sisters in continuing to further their mission of caring for all – including the sick and the vulnerable. We look to the data in this report to provide a detailed map of our communities' health and contributing issues to health and wellbeing. It helps us reflect on the progress made in the last three years and reinforce our priorities and goals for the coming three years.

This assessment and plan are simply one piece of our efforts as we continue the process of working toward healthier lifestyle habits and ultimately healthier communities. Together we are making our communities stronger and healthier.

Pax et bonum – Pace e bene – Peace and all good,



Jane Curran-Meuli, President
SSM Health Monroe Hospital & Monroe Clinic Medical Group



Jane Curran-Meuli
*SSM Health
Monroe Hospital
President*

After months of evaluation and planning, we are pleased to present Green County with the 2021 Community Health Needs Assessment (CHNA). We want to offer a sincere “thank you” to those community members and coalition participants who contributed to this process.

We have made great progress over the last three years in the areas of Mental Health, Substance Misuse, Physical Activity and Food Security & Breastfeeding. In the midst of this work, the COVID-19 pandemic began. The effects of this pandemic have touched all aspects of our community – from healthcare, to schools, to businesses and everything in between. We know that COVID-19 will continue to impact the health of our community, but the efforts of the Green County Healthy Community Coalition will aid in our community's recovery.

I am eager to see the advances that our coalition will make within our new health priority areas. This CHIP will include an increased focus on the social determinants of health and the inclusion of a health equity lens. These additions are imperative in ensuring our health interventions benefit everyone in our community.

I would like to extend an open invitation to our community to join the Green County Healthy Community Coalition and help make Green County a healthy place to live, work and play!



RoAnn Warden
Green County Public Health Officer/Director



RoAnn Warden
*Green County Public
Health Officer/Director*



About SSM Health Monroe Hospital & Monroe Clinic Medical Group

SSM Health Monroe Hospital & Monroe Clinic Medical Group was founded in 1939 at the same time St. Clare Hospital was founded by the Sisters of St. Agnes from Fond du Lac, Wisconsin. In 1992, they consolidated services and became SSM Health Monroe Hospital & Monroe Clinic Medical Group where the main campus is located at 515 22nd Avenue, Monroe, Wisconsin. SSM Health Monroe Hospital & Monroe Clinic Medical Group is a 58-bed facility and is the only hospital/healthcare clinic in Green County. SSM Health Monroe Hospital & Monroe Clinic Medical Group offers a comprehensive range of acute inpatient services, along with an ambulatory care consisting of primary care and specialty care providers. Services include radiation oncology, total joint replacement, women's health services, cardiac care, pulmonary rehab, chronic disease education and other clinical departments.

SSM HEALTH MONROE HOSPITAL & MONROE CLINIC MEDICAL GROUP LOCATIONS Wisconsin

Albany
Durand
Blanchardville
Brodhead
SSM Health Express Care (Monroe)
SSM Health Monroe Hospital (Monroe)
New Glarus

Illinois

Durand
Freeport Clinic & Urgent Care
Freeport Eye Care
Highland Women's Care (Freeport)
Lena

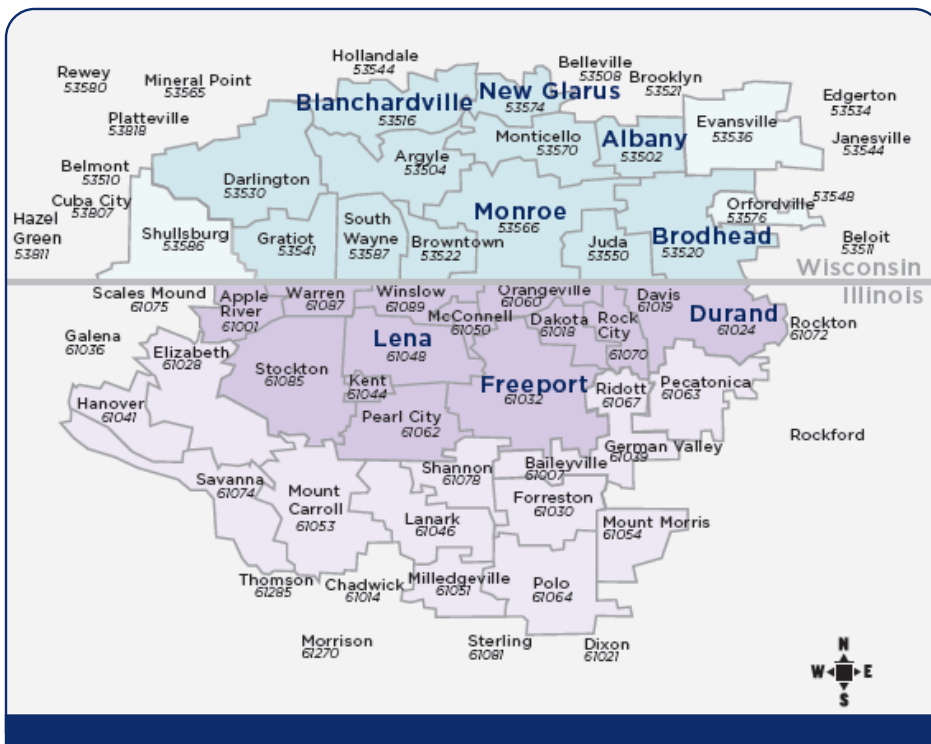
Hospital at a Glance

	2020
Admissions	2254
Outpatient Visits	170,030
ER Visits	15,633
Births	464
Beds	58
Employees	1160
Medical Staff	143



Wisconsin patients account for 51% of SSM Health Monroe Hospital & Monroe Clinic Medical Group's patient visits and 53% of SSM Health Monroe Hospital & Monroe Clinic Medical Group's admissions. Stephenson County accounts for over half of the births to SSM Health Monroe Hospital & Monroe Clinic Medical Group. There are six branch clinics in our rural Green County communities and six clinics in Stephenson County.

Our Community



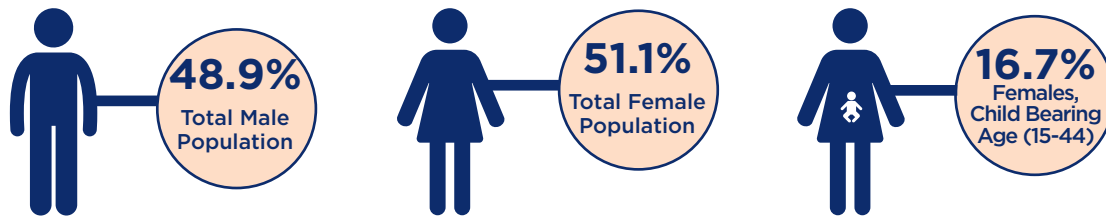
For purposes of this community health needs assessment (CHNA), SSM Health Monroe Hospital & Monroe Clinic Medical Group defines its community as Green County, Wisconsin and surrounding portions of Lafayette County, Wisconsin and Stephenson County, Illinois and Jo Daviess County, Illinois within the hospital's primary and secondary service areas, a service region that crosses state-lines. SSM Health Monroe Hospital & Monroe Clinic Medical Group partners with Green County Public Health and the Green County Health Community Coalition in Wisconsin; and Stephenson County Public Health, FHN and the Healthy Community Coalition in Illinois. The majority of the CHNA will focus on Green County and

SSM Health Monroe Hospital & Monroe Clinic Medical Group primary and secondary service areas
(geography with zip code and cities)

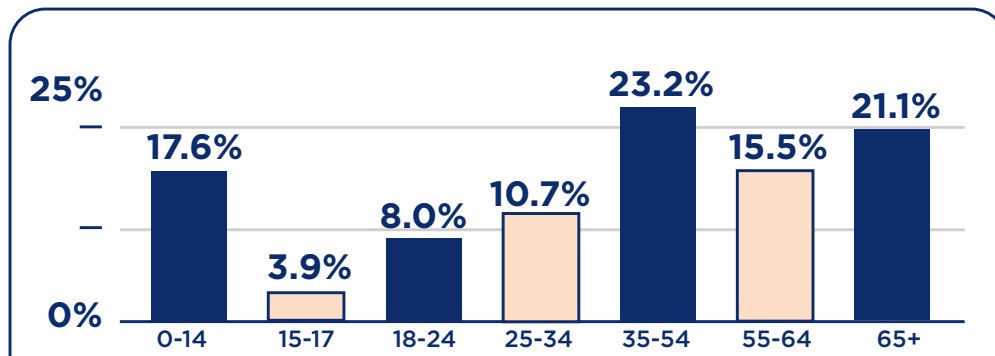
Our Community

Demographic for the SSM Health Monroe Hospital & Monroe Clinic Medical Group

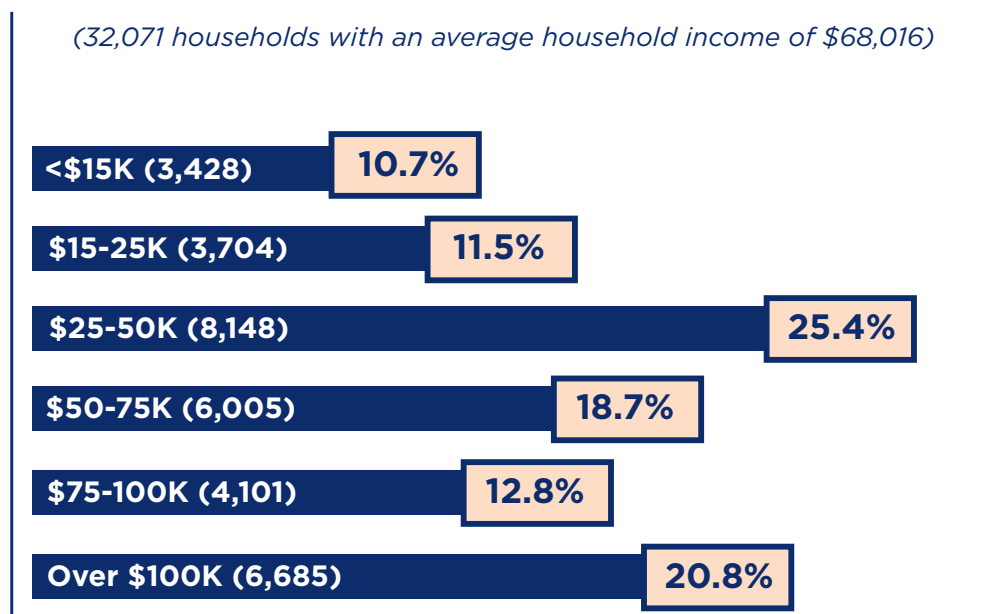
Population



Age



Household Income



The COVID-19 Pandemic & Our Community

The novel coronavirus first appeared in China in 2019. This new virus was similar to SARS-CoV so it was named SARS-CoV-2. The disease caused by the virus was named COVID-19 (COroNaVirusDisease-2019) to indicate that it was discovered in 2019. SARS-CoV-2 is a respiratory virus. Confirmed cases of the virus began to appear in the United States early on in 2020.

On March 12th, 2020 Governor Tony Evers declared a Public Health Emergency in response to the coronavirus, then on March 13th schools were closed statewide, and on March 24th the Safer at Home order went into effect. On March 20th, 2020 Green County Public Health reported the first confirmed case of COVID-19 in Green County. On June 14th of 2020 our department reported out the first death attributed to COVID-19, of a Green County resident.

Throughout the pandemic thousands of Green County residents have had to quarantine or isolate at home to help prevent the spread of COVID-19. These people have had to miss work, switch to working from home, switch to online learning, miss school programs, and alter their lives for a period of time so that they didn't get others sick. The actions of our community members who have had to isolate or quarantine are greatly appreciated.

It is important to remember that Green County residents, Wisconsinites and Americans have lost their lives due to COVID-19. All of us a part of the Green County Healthy Community Coalition extend our sympathy to the friends and family of those individuals.

2020 COVID-19 DATA:

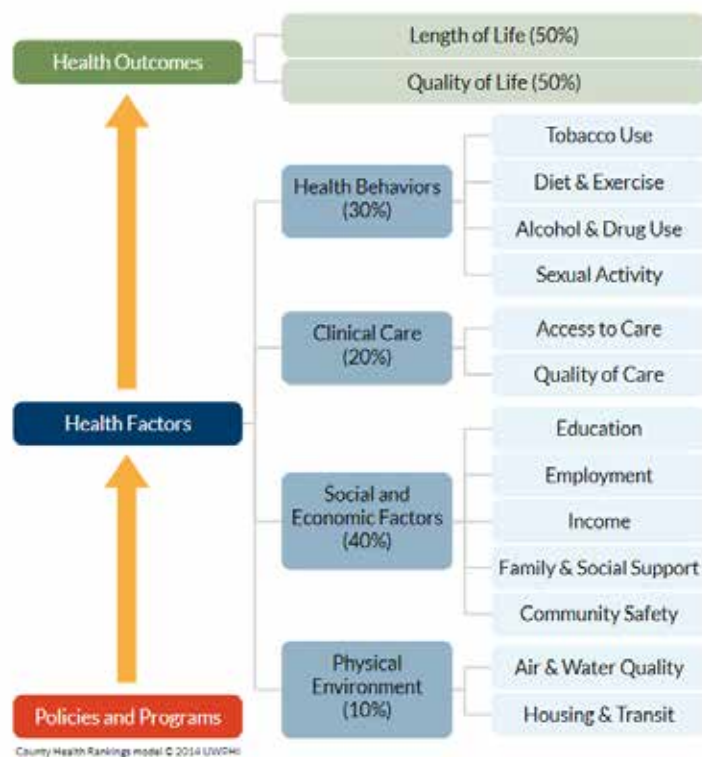
- 2,396 people tested positive for COVID-19.
- 3,173 people were identified as close contacts (within 6 feet of a positive case for more than 15 minutes).
- 5,569 total people tested positive or were in close contact with a positive case.
- 18 confirmed and/or probable COVID 19 deaths were reported.
- Percentage of individuals contacted within 24 to 48 hours after being identified as a positive case or close contact:
 - Positive case: 95.71%
 - Close contact: 97.35%
- Percentage of fully completed interviews with positive cases of close contacts:
 - Positive case: 96.3%
 - Close contact: 89.4%
- Reported and investigated 74 COVID-19 disease outbreaks. These outbreaks occurred in long term care facilities, health care facilities, workplace, educational facilities, group homes and other settings.



Green County Government Services Building



What makes a community healthy?



This model was developed for County Health Rankings and Roadmaps by University of Wisconsin Population Health Institute. It helps us look at our County's needs and conduct our assessment.

This model is rooted in the multiple determinants of health and focuses on those health factors (or determinants) that are modifiable and measurable at the community level: health behaviors, clinical care, social and economic factors, and the physical environment.

Process for *Green* County

The GCHCC is co-chaired by representatives from SSM Health Monroe Hospital & Monroe Clinic Medical Group and Green County Public Health. The coalition is comprised of public health, healthcare leaders and representatives of the underserved population. The Coalition determined our community health priorities after collecting primary and secondary community health data.

An online community health needs assessment survey in English and Spanish was available for community members to complete during February and March of 2021. This survey asked about people's personal health, their thoughts about the community's health, and gave space for people to provide suggestions. It took approximately 10 minutes to complete with 750 individuals fully completing the survey. Community members could submit a comment at the end of the survey. When these comments were analyzed we identified the 10 most frequent comment topics/suggestions.

Five Community Conversations were held in several communities within Green County to learn about residents' concerns, solicit their ideas on healthcare and how it could be improved. These conversations gave us insight on what community perception was and opened-up the conversation for ideas on how to improve health care access and resources. Approximately 30 individuals contributed comments on a range of issues that affect population health and well-being, barriers for underserved populations and other community concerns.

Eight "key informant" interviews were held with healthcare professionals from a variety of settings in Green County. During these interviews and conversations we asked questions and took notes. Afterwards those responses were analyzed to identify common themes.

Secondary data was collected from multiple sources and analyzed and revealed health disparities and key issues impacting social determinants of health. Data collection included demographic information, chronic disease and morbidity/mortality information, health status indicators, health behaviors and general environment information. This data is compared to state and national benchmarks.

The community survey and secondary data were presented to the coalition. The committee identified and prioritized community health needs based on importance to community members and our ability to make a significant impact.

The requirement that the hospital conducts a Community Health Needs Assessment (CHNA) under the Patient Protection and Affordable Care Act (PPACA) asks hospitals to pay specific attention to health care concerns that affect vulnerable populations. This prioritized list was then presented to SSM Health Monroe Hospital & Monroe Clinic Medical Group Board of Directors and Green County Public Health Board for approval.



Green County Highlights

SSM Health Monroe Hospital & Monroe Clinic Medical Group offering behavioral health services in local schools: *Monroe, New Glarus, Albany and Monticello*



The number of Certified Lactation Counselors (CLCs) in Green County has increased to 9

Jacob's SWAG Foundation launched their "Got Your Back" App for mental health

The Green County Opioid Dashboard was launched

Let's Get MOO-ving Green County 2021
623 employee participants
21 participating businesses

The first "Self-Care BINGO" event was offered in December 2020

Green County Demographics

Demographic Category	Demographic Factor	Green County	WI	United States
Race and Ethnicity	Black or African American alone	0.8%	6.7%	13.4%
	American Indian and Alaska Native alone	0.4%	1.2%	1.3%
	Asian alone	0.7%	3.0%	5.9%
	Two or More Races	1.2%	2.0%	2.8%
	Hispanic or Latino	3.1%	7.1%	18.5%
	White alone, not Hispanic or Latino	94.1%	80.9%	60.1%
	White alone	96.8%	87.0%	76.3%
Poverty	Persons in poverty	6.4%	10.4%	10.5%
Health Insurance	Persons without health insurance, under age 65 years	5.4%	6.8%	9.5%
Education	High school graduate or higher, percent of persons age 25 years+, 2014-2018	92.4%	91.9%	87.7%
	Bachelor's degree or higher, percent of persons age 25 years+, 2014-2018	23.6%	29.5%	31.5%
Age	Persons under 5 years, percent	5.3%	5.7%	6.0%
	Persons under 18 years, percent	22.1%	21.8%	22.3%
	Persons 65 years and over, percent	19.3%	17.5%	16.5%

Notable Data:

- Green County's median income is \$62,151, with average household size being 2.42 persons.
- According to 2012 data, all businesses owned in Green County are 3,379; of those only 52 are minority-owned.
- Green County has a slightly older population than their respective states and the United States.
- Green County is a less diverse community.

Sources: Wisconsin Home Town Locator, www.wisconsin.hometownlocator.com

US Census Bureau, www.census.gov.com

City-Data, www.city-data.com

Green County Community by the Numbers



Referrals to the Green County Child Advocacy Center from 2018-2020

72% Sexual Abuse
18% Physical Abuse
5% Neglect



Income Levels

Median Household Income
Green County \$64,502
Wisconsin \$64,168

Binge Drinking

27% of adults report binge or heavy drinking, compared to the national average of 15%



12%

12% of Households in Green County have at least 1 of 4 housing problems:

- Overcrowding
- High housing costs
- Lack of kitchen facility
- Lack of plumbing facilities

Mental Health

21% of adults with a mental illness are not receiving treatment and 19% of children with a mental illness are not receiving treatment.



1 in 4 adults in the US experience mental health issues.

Education Levels

Less than 9th grade 2.07%
9th to 12th 5.94%
High School Graduate 35.45%
Some college or associates degree 21.19%
Associates degree 12.21%
Bachelors Degree 16.05%
Graduate Degree 7.54%



Median Age

Median age in 2019
is 43.2

Obesity

33% of adults in Green County are considered obese.

Obesity is a risk factor for multiple chronic diseases.



Suicide

16% of Green County high school students seriously considered attempting suicide in the past 12 months.
12% reported making a plan on how they would attempt suicide.

Children on WIC

(Women, Infant, Children) 1-4yrs of age

26.3% of the participants in this age group identify as Hispanic
12.8% of the participants in this age group are considered obese, overweight or at risk of being overweight.



Physical Inactivity

24% of Green County residents report they are physically inactive compared to the Wisconsin average of 20%.

Green County Community by the Numbers

Housing

9% (1,307) of households in Green County spend more than 50% of their income on housing



Breastfed Babies

36.2% Green County below the state average of 38.6%

33.3% of infants on WIC (exclusively breastfed), above the state average of 27.6%.



Immunizations

82% of Green County two-year-olds are up-to-date with immunizations. This is above the state average of 72%.



Access to Healthy Food

9% of residents lack adequate access to food, compared to the state's average of 9%.



Dental Care

32% of Green County residents had no recent dental visit, compared to the state average of 35%.



Top Three Cancer Diseases

1. Lung
2. Breast
3. Prostate



Infant Mortality

Green County's infant mortality rate 5.6%, which is lower than the Wisconsin average of 6.1%.



Alcohol remains the number one substance abused in Green County

Alcohol 86%
Marijuana 31%
Opiates/Heroin 18%
Cocaine 11%
Methamphetamine 7%
Benzodiazepine .4%



Leading Causes of Death

1. Heart Disease
2. Cancer
3. Other
4. Alzheimer's Disease
5. Stroke



Children Living in Poverty

There is a large disparity among children living in poverty.
29% Black
8% White
7% Hispanic

Free or Reduced Lunch

More than 35% of children in Green County are eligible for free or reduced school lunch.



Growth of Race/Ethnic Populations, 2000-2020

Hispanic /Latino population increased 359%, Black population increased 142% and Asian or Pacific Islander population increased 78% while American Indian decreased 26%.



Green County Health Priorities

1. Adverse Childhood Experiences (ACEs)

What happens to people during their childhood impacts them throughout their life, and negative experiences at a young age can have detrimental consequences to a person's health.

ACEs are traumatic events and unsafe or unstable environments experienced between the ages of 0 through 17. ACEs significantly affect childhood development, well-being, adult health, and social productivity. The more ACEs experienced as a child, the greater the individual's risk for chronic disease and mental illness throughout life.

Local resources include: Green County Public Health, Green County Human Services, Avenues Counseling, United Way of Green County, Vitality Youth Services, Green County Child Advocacy Center, Southwest CAP, Green County Childcare Network, SW Behavioral Health Partnership, 4C, Union Presbyterian Church, Green County Foster Care Program, Local Schools, Southwest Behavioral Health Partnership.

2. Housing

Safe, affordable housing is imperative to the health of an individual and for a thriving community. Evidence shows housing and health can be understood as supporting the existence of four pathways. First, the health impacts of not having a stable home (the stability pathway). Second, the health impacts of conditions inside the home (the safety and quality pathway), third, the health impacts of the financial burdens resulting from high-cost housing (the affordability pathway) and lastly, the health impacts of neighborhoods, including both the environmental and social characteristics of where people live (the neighborhood pathway).

Local resources include: Green County Public Health, Monroe Chamber of Commerce, Green County Human Services, Green County Development Corporation, United Way of Green County, Family Promise, St. Vincent DePaul, Monroe Main Street, Green County Board of Supervisors, Green County Housing, Veterans Advocate.

3. Mental Health

Community education, prevention, access to care, addressing binge drinking and fighting stigma are important in sustaining a community that supports mental health.

One in four Americans suffer from a mental health issue each year. Mental health includes our emotional, psychological and social well-being. It impacts general health and quality of life at every stage. The Pandemic has not helped with the isolation people have felt. Nationwide and locally, mental health professionals are challenged by a need for services that exceeds availability. The result is mental health care in Green County is largely focused on providing crisis intervention and follow-up services.

Local resources include: Green County Public Health, Green County Human Services, Extension-University of Wisconsin, Southwest Behavioral Health Partnership, Green County Sheriff, Brodhead Policy Department, Better Brodhead, Aster Retirement Home, Colony Brands, Family Promise, FAITH, Green County Childcare Network, Avenue's Counseling, Vitality Youth Services, NAMI of Green County, SARP, SW CAP, Redemption Church, Medistar.



Appendix:

Community Health Data Sources

AHEC CHIP Intern Community Health Status Indicators

City-Data

Community Commons

County Health Rankings

Green County Community Health Survey

Green County Public Health/WIC-Women, Infant, Child

Green County Human Services

Green County Youth Risk Behavioral Survey

Healthy People 2020

SSM Health Monroe Hospital & Monroe Clinic Medical Group Decision Support

NAMI-National Alliance for Mental Illness

Out of Reach- National Low Income Housing Coalition

U.S. Census American Community Survey

US Census Bureau

UW Extension-Green County

Wisconsin Behavioral Risk Factor Survey

Wisconsin Department of Health Services

Wisconsin Department of Public Instruction

Wisconsin Department of Workforce Development

Wisconsin Epidemiological Profile on Alcohol and Other Drugs

Wisconsin Home Town Locator

Appendix:

Steering Committee

The Green County Healthy Community Coalition (GCHCC) Steering Committee meets quarterly to assist with goal setting and guide decision making, as well as leverage and grow the Coalition.

Cara Carper, *Green County Development Corporation*

Kathy Comeau, *Better Brodhead*

Bridget Craker, *Green County Public Health Department*

Melissa Even, *Monroe Chamber of Commerce*

Bob Gibson, *Green County Human Services*

Trent Henning, *Green County YMCA*

Tammie Jamiska, *SSM Health Monroe Hospital & Monroe Clinic Medical Group*

Stephanie King, *Green County Child Advocacy Center*

Samantha Kubly, *School District of Monroe*

Jill Leitzen, *Kuhn North America, Inc*

Ed Maksym, *Monroe Main Street Farmers Market*

Tracy Meier, *Colony Brands, Inc.*

Rob Miles, *Green County Human Services*

Megan Schilt, *Avenues Counseling*

Victoria Solomon, *Green County UW-Extension*

Laura Steiner, *ADRC-Aging Disability & Resource Center*

RoAnn Warden, *Green County Public Health*

Appendix:

Green County Healthy Community Coalition Community Members and Resources

The following is a list of Coalition members and stakeholders who participated in the identification of our health needs. Coalition members are divided into four work groups, each of which is focused on initiatives that respond to one of the four health priorities identified in the CHNA.

Amanda Gerber, Ashford Retirement
Adrienne Juewicz, Green County Human Services
Amber Russell, Aging Disability and Resource Center
Amy Christianson, Satellite Reach Dane
Andrea Gallagher, SSM Health Monroe Hospital & Monroe Clinic Medical Group
April Yancer, DATCP
Ashlee Glowacki, Vitality Youth Services
Ashley Pfarr, Green County Public Health
Bob Gibson, Green County AODA
Bridget Craker, Green County Public Health
Bridget Mouchon-Humphrey, SWCAP
Brook Skidmore, Growing Tree
Cara Carper, Green County Development Corporation
Chelsea Hardacre, SSM Health Monroe Hospital & Monroe Clinic Medical Group
Chris Hughes, Brodhead Police Dept
Corrine Hendrickson, Corrines Little Explorers
Dan Williams, Green County
Darla Estes, Early Head Start
Deb Douglas, Fowler Dental
Dilcia Varela, Better Brodhead
Dustin Hoffman, Monroe School District
Ellen Andrews, UW-Extension-Green County
Erica Roth, Community Member
Geoff Fricke, Bank of New Glarus
Ginny Fricke, Green County Public Health
Stephanie King, Green County CAC
Hayden Webber, Community Member
Jaime Batz, Green County Public Health Department
Jeff Newcomer, Community Member
Jeff Skatrud, Monroe Police Department
Jennifer Amacher, Green County Human Services
Joan Rufenacht, Green County Health Committee
Joe Klocek, Community Member
John Kalmanek, Community Member
Joni Marty, Green County Public Health
Joan Rufenacht, Green County Health Committee

Josh Trame, City of Monroe
Karen Fowdy, Community Member
Karin Krimmer, Literacy Council
Kathy Comeau, Better Brodhead
Krista Bethke, Sexual Assault Recovery Program
Kris Wisnefske, NAMI
Lance Smith, Zwingli UCC
Laura Simkin, Community Member
Laura Vorpal, Community Member
Lindsay Hyland, Community Member
Lisa Paske, SSM Health Monroe Hospital & Monroe Clinic Medical Group
Matt Urban, Blackhawk Technical College
Megan Altfillische, Better Brodhead
Megan Schilt, Avenues Family Counseling
Morgan Kennison, Green County Human Services
Nate Perry, Belleville School District
Nicole Wyss, 4-C
Black Canterbury, Redemption Church
Reiauna Taylor, Green County Public Health
Rick Gleason, Family Promise
RoAnn Warden, Green County Public Health
Rob Miles, Green County Human Services
Ron Spielman, SSM Health Monroe Hospital & Monroe Clinic Medical Group
Shannon Kazuba, Community Member
Samantha Kubly, Monroe School District
Samantha Skowronski, Green County Public Health
Steve Brewer, SSM Health Monroe Hospital & Monroe Clinic Medical Group
Sybil Teehan, Community Member
Tammie Jamiska, SSM Health Monroe Hospital & Monroe Clinic Medical Group
Teresa Keehn, Green County United Way
Todd Hackman, St. John's United Methodist Church
Tracey Chugg, Green County
Tracy Meier, Colony Brands
Victoria Solomon- UW Extension-Green County

**This coalition is open to the community at large and does not exclude any community members or partnerships.*

Appendix: Community Conversations

What do you consider some of the strengths in our community/county?



What do you consider major health concerns for community/county residents?



Appendix:

Community Conversations

What do you consider some of the barriers for community/county residents to be healthy that are not being addressed?

endocrinologist
transportation
lack of education
care transition
mental health
misinformation
dental care
healthy food
childcare workers
volunteer commitment
wage

Appendix:

Health Priority Results

Health Priority Selection Process:

Primary data and secondary data were collected from multiple sources. The primary data included results from: the virtual community health survey, community conversations and key informant interviews. Secondary data was gathered from organizations like the CDD, Wisconsin Department of Health Services and others (see page 15 for a complete list).

This data was presented to the Green County Healthy Community Coalition. Stakeholders were asked to consider the following before voting:

- Do our current health priorities rise to the top?
- Keep in mind the health areas which have the largest community impact.
- Which health areas have the most serious impact?
- What health issues arise that our community can make a change?
- In which areas can change be made over a reasonable timeline?

Participants were then instructed to vote for their top three health issues for the Coalition to focus efforts and resources around. Attendees voted for health priorities virtually.

Voting Results	Choice	Count
Adverse Childhood Experiences (ACEs)	14.62%	19
Affordable Health Plans	1.54%	2
Alcohol and Other Drug Abuse (AODA)	7.69%	10
COVID Response	5.38%	7
Early Childhood	7.69%	10
Environmental Health	1.54%	2
Physical Health and Wellbeing	10.00%	13
Transportation	3.08%	4
Improved services for people with developmental disabilities	5.38%	7
Youth	10.00%	13
Mental Health	16.92%	22
Housing	16.15%	21

For More Information



Green County Public Health

N3152 HWY-81
Monroe, WI 53566

608-328-9390
info@greencountywi.org



SSM Health Monroe Hospital & Monroe Clinic Medical Group

515 22nd Avenue
Monroe, WI 53566

608-324-2000
monroeclinic.org



Green County Healthy Community Coalition

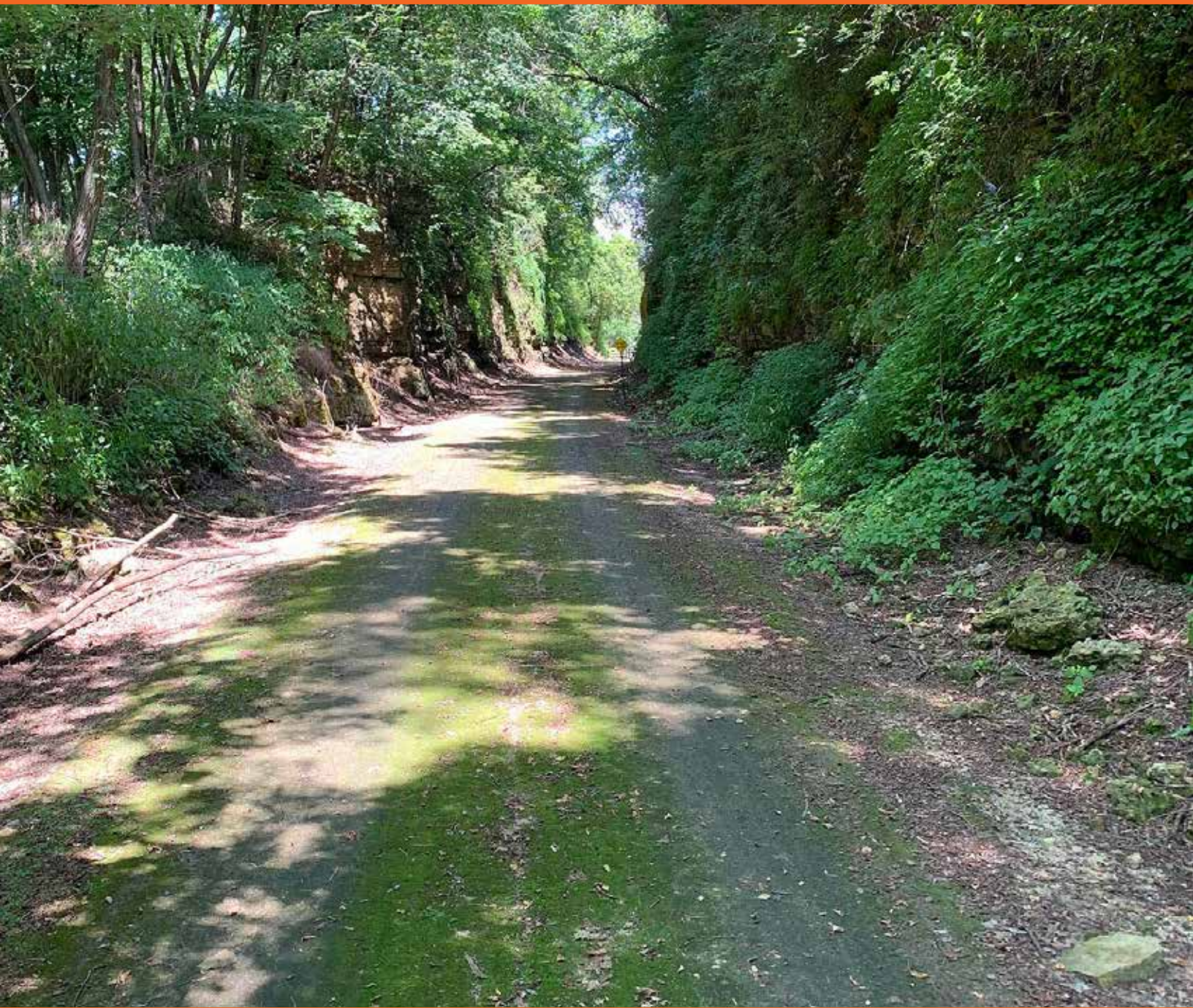
greencohcc.org
Like us on Facebook

This report has been endorsed by SSM Health Monroe Hospital & Monroe Clinic Medical Group Board on October 27, 2021 and Green County Public Health Committee, on November 10, 2021.

Healthy Community Coalition of *Stephenson County*



Healthy Community Coalition
of Stephenson County



Process for Stephenson County

The Healthy Community Coalition of Stephenson County, co-chaired by representatives from SSM Health Monroe Hospital & Monroe Clinic Medical Group, Stephenson County Public Health and FHN, is comprised of public health, healthcare leaders, other agencies, community members and representatives of the underserved population. The Coalition determined our community health priorities after collecting primary and secondary community health data.

An online community health needs assessment survey in English and Spanish was available for community members to complete from February to March of 2021. This survey asked about people's personal health, their thoughts about the community's health, and gave space for people to provide suggestions. It took approximately 10 minutes with 250 individuals fully completing the survey. Community members could submit a comment at the end of the survey. When these comments were analyzed we identified the most frequent comment topics/suggestions.

Five Community Conversations were held in several communities within Stephenson County to learn about residents' concerns, solicit their ideas on healthcare and how it could be improved. These conversations gave us insight on what community perception was and opened-up the conversation for ideas on how to improve health care access and resources. 29 individuals contributed comments on a range of issues that affect population health and well-being, barriers for underserved populations and other community concerns.

Nine "key informant" interviews were held with healthcare professionals from a variety of settings in Stephenson County. During these interviews and conversations we asked questions and took notes. Afterwards those responses were analyzed to identify common themes.

Secondary data was collected from multiple sources and analyzed and revealed health disparities and key issues impacting social determinants of health. Data collection included demographic information, chronic disease and morbidity/mortality information, health status indicators, health behaviors and general environment information. This data is compared to state and national benchmarks.

The representatives from FHN, SSM Health Monroe Hospital & Monroe Clinic Medical Group and Stephenson County Public Health reviewed the community survey and secondary data. They recommended the health priority leaning towards Youth Health Prevention. They shared data with the coalition to support their findings of this significant community need. The requirement that the hospital conducts a Community Health Needs Assessment (CHNA) under the Patient Protection and Affordable Care Act (PPACA) asks hospitals to pay specific attention to health care concerns that affect vulnerable populations. This prioritized list was then presented to SSM Health Monroe Hospital & Monroe Clinic Medical Group Board of Directors, FHN Board of Directors and Stephenson County Public Health Board for approval.





Stephenson County Highlights

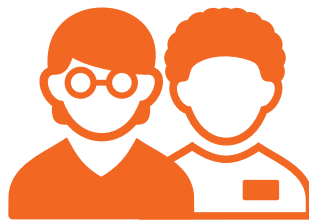


**Hired a
Community
Health Nurse**



**Planning began for
the FMA Total
Wellness Center/
Barbershop project**

**Offered free
Mental Health
First Aid
Training
to the
community**

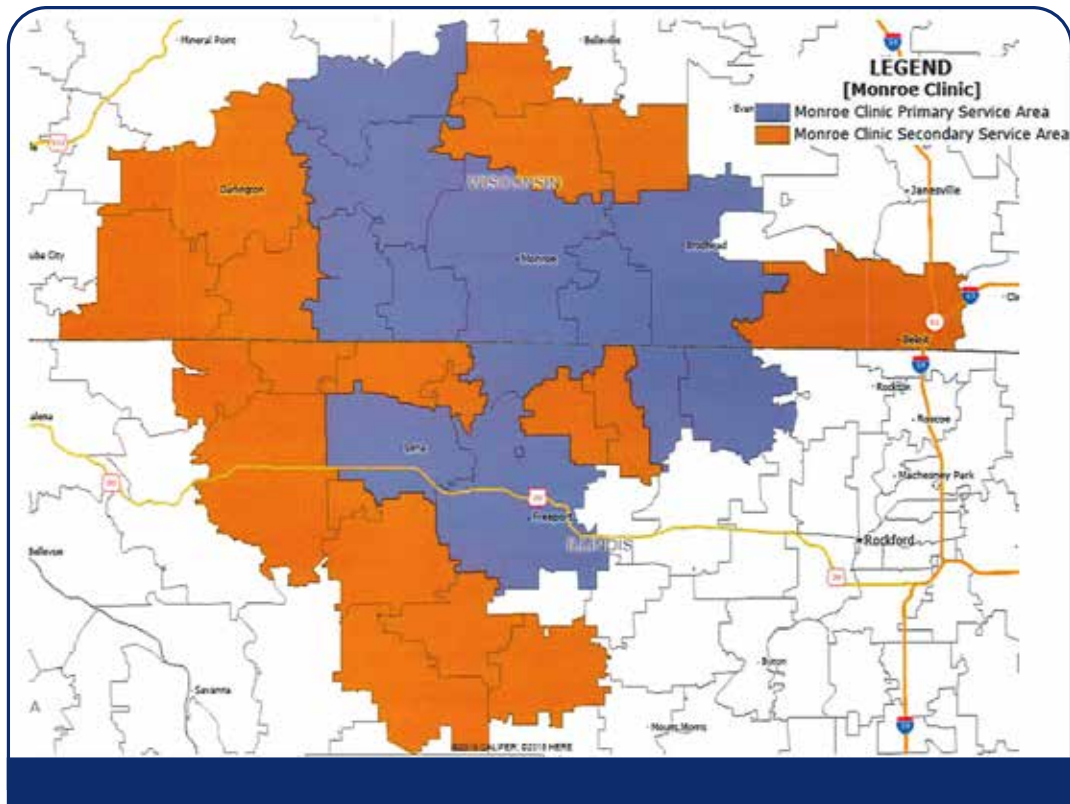


**Funded two
Medical Assistant
students to attend
Highland
Community
College**

21

**Offered 21 healthcare
presentations to
community members.**

Stephenson County Geography



Map of SSM Health Monroe Hospital & Monroe Clinic Medical Group Service Area

- *SSM Health Monroe Hospital & Monroe Clinic Medical Group Primary Service Area*
- *SSM Health Monroe Hospital & Monroe Clinic Medical Group Secondary Service Area*

Stephenson County's estimated population is 44,498 and according to City-Data is considered to be 60% Urban and 40% Rural. Stephenson County is nearly 565 square miles with a population density of 85 people per mile. Freeport, Illinois is about 26 miles from the main campus in Monroe, Wisconsin. SSM Health Monroe Hospital & Monroe Clinic Medical Group is one of the largest employers in Monroe and Green County. The Badger State Trail in Green County connects to the Jane Addams trail in Illinois. The trail continues to Freeport, Illinois and connects north and west to local counties within our service area. Both counties economic base is primarily manufacturing and agriculture with excellent schools, technical colleges and access to high-quality healthcare.

Stephenson County Demographics

Demographic Category	Demographic Factor	Stephenson County	IL	United States
Race and Ethnicity	Black or African American alone	10.4%	14.6%	13.4%
	American Indian and Alaska Native alone	0.3%	0.6%	1.3%
	Asian alone	0.7%	5.9%	5.9%
	Two or More Races	3.1%	2.1%	2.8%
	Hispanic or Latino	4.3%	17.5%	18.5%
	White alone, not Hispanic or Latino	81.8%	60.8%	60.1%
	White alone	85.4%	76.8%	76.3%
Poverty	Persons in poverty	11.5%	11.5%	10.5%
Health Insurance	Persons without health insurance, under age 65 years	6.2%	8.6%	9.5%
Education	High school graduate or higher, percent of persons age 25 years+, 2014-2018	92.5%	89.2%	87.7%
	Bachelor's degree or higher, percent of persons age 25 years+, 2014-2018	19.6%	34.7%	31.5%
Age	Persons under 5 years, percent	5.6%	5.9%	6.0%
	Persons under 18 years, percent	21.3%	22.2%	22.3%
	Persons 65 years and over, percent	23.4%	16.1%	16.5%

Notable Data:

- Stephenson County's median income is \$47,039, with average household size being 2.32 persons.
- In Stephenson County there are 3,177 businesses and of those 440 are minority-owned.
- Both Counties have slightly older populations than their respective states and the United States.
- Green County is less diverse than Stephenson County with fewer persons living in poverty.
- Stephenson County's median wage is significantly lower than Green County's.

Sources: Wisconsin Home Town Locator, www.wisconsin.hometownlocator.com

US Census Bureau, www.census.gov.com

City-Data, www.city-data.com

Median Income Levels

Median Household Income by Race/Ethnicity	White	Black	Hispanic
Stephenson County	\$52,091	\$29,162	\$35,425
Illinois	\$73,686	\$38,573	\$55,836
United States	\$68,785	\$41,935	\$51,811

Stephenson County Community by the Numbers

Low Birth Weight

Low birth weights are at 14% (almost double) in the black community compared to other Race/Ethnicities

14%



Access to Healthy Food

19% of the population receive Supplemental Nutrition Assistance Program (SNAP) compared to the national average of 12%



Juvenile Arrests

15 in Stephenson County compared to an Illinois average of nine



Free or Reduced Lunch

52% of children in Stephenson County are eligible for free or reduced lunch

TOP FIVE

Top Five Health Priorities based on the survey data, interviews, and secondary data are:

- Drug abuse/use (tobacco and alcohol)
- Transportation access
- Job availability and security
- Obesity/access to healthy food
- Affordable housing

Obesity

Obesity rates among Adults are 38% in Stephenson County compared to the state average of 29%



Children in Poverty

37% of Stephenson County children live in poverty compared to the state average of 25%.



Poverty by Race

Children Living in Poverty:
40% Black;
25% Hispanic
17% Asian
14% White

Teen Births

(Female ages 15-19)
Stephenson County-27
Illinois- 19
National Average-12



Reading Scores

Race disparity in average grade performance of 2.7
2.9 White
2.1 Hispanic
2.2 Black



Breastfed Children on WIC

16.9% of infants on WIC are breastfed exclusively compared to the state average of 7.6%



Stephenson County Health Priorities

Youth Health Prevention

- **Weight Management**
 - *Nutrition and eating habits*
 - *Exercise*
- **Positive Self Image**
 - *Self-Respect*
 - *Puberty*
 - *Peer Support*
 - *Sexually transmitted diseases*
- **Changing Learned Health Behaviors**
 - *AODA Education*
 - *Recognizing changing behaviors*

Local resources include:

Freeport Ministerial Alliance, United Way of Northern Illinois, Stephenson County Public Health, FHN, University of Illinois-Extension, Norman Sleezer Home, Freeport School District, Boys and Girls Club of Stephenson County

Appendix:

Healthy Community Coalition of Stephenson County

Jennifer Beck, Stephenson County Public Health
Craig Beintema, Stephenson County Public Health
Denise Book, Community Member
Carla Crawford, SSM Health Monroe Hospital & Monroe Clinic Medical Group
Holly Calcaterra, Stephenson County Public Health
Jane Curran-Meuli, SSM Health Monroe Hospital & Monroe Clinic Medical Group
Pastor Funches, St. Paul's Church
Ashley Harms, Amity Learning Center
Rev. Ken Hawes, Freeport Methodist Church
Christine Hoyle, YMCA of Stephenson County
Tammie Jamiska, SSM Health Monroe Hospital & Monroe Clinic Medical Group
Nicole Karakas, Stephenson County Public Health
Dana Keim, Stephenson County Public Health
Alicia Kepner, Highland Community College
Connie Kraft, United Way of Northern Illinois
Pat Leitzen Fye, Your Core Being
Kathy Martinez, FHN
Renea Noordhoff, Community Member
Patricia Norman, Community Member
Diane Reinhold, University Illinois-Extension
Lindsey Rochelle, Community Member
James Rhyne, Boys and Girls Club
Michele Schiess, SSM Health Monroe Hospital & Monroe Clinic Medical Group
Sonja Shoemaker, Senior Resource Center
Ron Spielman, SSM Health Monroe Hospital & Monroe Clinic Medical Group
Danairo Thomas, Barber
Rev. Threadgill, Mt. Carmel Missionary Baptist Church
Rudy Puente, Freeport School District
Devan Wallace, Stephenson County Public Health
Cara Williams, Norman C. Sleezer Home

**This coalition is open to the community at large and does not exclude any community members or partnerships.*

Appendix:

Community Conversations

What do you consider some of the barriers for the residents of Stephenson County that are not being addressed?



For More Information



Stephenson County Public Health

10 W. Linden Street
Freeport, IL 61032

815-235-8271
Stephensoncountyil.gov



FHN

1045 W. Stephenson Street
Freeport, IL 61032

877-600-0346
Fhn.org



SSM Health Monroe Hospital & Monroe Clinic Medical Group

515 22nd Avenue
Monroe, WI 53566

608-324-2000
monroeclinic.org



Healthy Community Coalition of Stephenson County

**Healthy Community Coalition
of Stephenson County**

This report has been endorsed by SSM Health Monroe Hospital & Monroe Clinic Medical Group Board, FHN Hospital Board and the Stephenson County Public Health Board in October 27, 2021.