

COMMUNITY HEALTH NEEDS ASSESSMENT REPORT



DUNN COUNTY, WI
2019



Dunn County Health Department



We would like to apologize for the delay in putting out the data from the Dunn County Community Health Needs Assessment. Like many others, COVID-19 forced us to take a detour from our original plans and time frames in order to prioritize the health and safety of our community. As you go through this document, please keep in mind that the data used is from 2019.

This document may be copied and distributed for educational or advocacy purposes. For any reproduction of this document, in part or in whole, please cite: 2019 Dunn County Community Health Needs Assessment Report, produced by members of the Dunn County Community Health Needs Assessment Steering Committee.

TABLE OF CONTENTS



The 2019 Dunn County Community Health Needs Assessment (CHNA) process and results are described in this report. The purpose of the CHNA was to identify the health needs in the community, prioritize the top health concerns, and engage the residents in developing a shared sense of purpose towards health improvement in the county.

INTRODUCTION	4
EXECUTIVE SUMMARY	6
STEERING COMMITTEE	7
COLLABORATIVE AGENCIES	8
HEALTH DUNN RIGHT COALITION	9
CHNA & CHIP OVERVIEW	10
2019 CHNA TIMELINE	11
DUNN COUNTY DEMOGRAPHICS	12
COMMUNITY PROFILE	14
RESPONDENT DEMOGRAPHICS	15
DATA COLLECTION METHODS	18
COMMUNITY SURVEYS	20
ANALYSIS OF SECONDARY DATA	22
PRIORITIZING & RANKING DATA	22

TOP RANKED HEALTH AREAS	24
MENTAL HEALTH AND WELLNESS	26
HEALTHY ENVIRONMENT	27
CHRONIC DISEASE	28
ALCOHOL, NICOTINE, AND DRUGS	29
SAFE & QUALITY HOUSING	30
FAMILY HEALTH	31
TRANSPORTATION	32
ORAL HEALTH	33
HEALTHY NUTRITION	34
CHIP.	36
MENTAL HEALTH	38
HEALTHY ENVIRONMENT	39
CHRONIC DISEASE	40
AND	41
SAFE & QUALITY HOUSING	42
APPENDIX A: THE SURVEY	44
APPENDIX B: CONCERNS & SOLUTIONS	55
APPENDIX C: ABBREVIATION DEFINITIONS	65
APPENDIX D: HEALTH AREA RANKINGS	66
APPENDIX E: COMMUNITY RESOURCES	67
SOURCES / REFERENCES	68



INTRODUCTION



EXECUTIVE SUMMARY

This 2019 Dunn County Community Health Needs Assessment was conducted by the Community Health Needs Assessment Steering Committee. The Committee is a collaborative venture involving nonprofit organizations, local health care facilities, UW-Stout and the Dunn County Health Department. The purpose of the assessment is to evaluate and prioritize the health concerns in the county and mobilize the community



in working towards health outcomes. As a result of the assessment process, collaborative interventions can be implemented to align with the identified health priorities.

2019 CHNA TOP RANKED HEALTH AREAS:

Mental Health • Healthy Environment • AND • Chronic Disease • Safe & Quality Housing

The final CHNA report provides useful information to public health officials, health care providers, policy makers, organizations, community groups and individuals who are interested in improving the health status of our community. The Steering Committee and community partners will utilize the assessment results to create action-oriented plans for their organizations and coalitions.

The **Community Health Improvement Plan** (CHIP) is a three-year action plan that is created to address the health priorities identified by the CHNA. The CHIP (pg. 32) outlines our goals to improve each health area as well as actions to accomplish each goal.

COMMUNITY RESOURCE INVENTORY

Dunn County has many organizations that are committed to improving community health and wellbeing. The Steering Committee assembled a list of community resources that can be mobilized to address the health priorities in the community. The list was created using data collected from partnership connections using local directories, and internet sources. This listing is not intended to be exhaustive. Please refer to Appendix E

STEERING COMMITTEE

The 2018-2019 Community Health Needs Assessment Steering Committee is made up of nine community organizations in Dunn counties. The Steering committee is working together, to share financial support, resources, and commitment to leverage the health improvements, thereby reducing duplication of public and private sector efforts in the county. Members of the Community Health Needs Assessment Steering Committee include:

CRISTY LINSE	Director, UW Stout Center of Study & Promotion of Health & Wellbeing
CHRISTA CUPP	Public Health Educator, Office of Policy & Practice Alignment, W. Region Div. of Public Health
DEB BENOIT	Public Health Nurse, Dunn Co. Health Dept.
ELLEN BLUMER	Public Health Nutrition Manager/WIC Director, Dunn County Health Dept.
GEORGINA TEGART	Executive Director, Community Foundation of Dunn County
JENNIFER BENRUD	Executive Director, Prevea Health - Western Wisconsin
JULIE BENDEL	Development Assistant, Community Foundation of Dunn Co.
KATHY ASPER	Manager of Prevention Services, Arbor Place, Inc.
KT GALLAGHER	Director/Health Officer, Dunn Co. Health Department
LAURIE REARDON	Center Manager – Dental, Family Health Center of Marshfield, Inc.
LINDSEY BANASZYNSKI	Regional Business Development Manager, Prevea Health - Western WI
LISA RATHKE	Student Health Nurse, UW Stout -Student Health Services
SARA CARSTENS	Director of Community Wellness & Engagement, Mayo Clinic Health System
STEPHANIE HINTZ	Human Dev. & Relationships Educator, Extension Dunn County
TYLER JACKLES	Volunteer Coord., Marshfield, AmeriCorps Member, United Way of Dunn Co.

*Financial support to print
and disseminate the
report provided by:*



COLLABORATIVE AGENCIES

Individuals from the following agencies attended open-forum style meetings coordinated by Mayo Clinic Health System and Dunn County Health Department. The meetings served as an opportunity for all attendees to participate in the planning and execution of the Dunn County Community Health Needs Assessment, and all were welcome to provide feedback about preliminary findings.

AGING & DISABILITY RESOURCE
CENTER OF DUNN CO.

ARBOR PLACE

BOYS AND GIRLS CLUB

BRIDGE TO HOPE

CEDAR CORPORATION

CITY OF MENOMONIE

COMMUNITY FOUNDATION
OF DUNN CO.

DUNN CO. CRIMINAL JUSTICE
COORDINATING COUNCIL

DUNN CO. HEALTH DEPT.

DUNN CO. VETERANS
SERVICE OFFICE

DIVISION OF PUBLIC HEALTH;
WESTERN WISCONSIN REGION

DUNN CO. SHERIFF'S OFFICE

DUNN CO. BEHAVIORAL HEALTH

FAMILY RESOURCE CENTER

HEAD START

MAYO CLINIC HEALTH SYSTEM

MENOMONIE PUBLIC LIBRARY

MENOMONIE SCHOOL DISTRICT

OUR SAVIOR'S LUTHERAN CHURCH

PARTNERS FOR RESILIENCE

POSITIVE ALTERNATIVES

STEPPING STONES

TAINTER LAKE IMPROVEMENT
ASSOCIATION

UNIVERSITY OF WI – STOUT

UW – EXTENSION DUNN COUNTY

WESTCAP

WISCONSIN DEPARTMENT OF
NATURAL RESOURCES

THE CREATION OF HEALTH DUNN RIGHT

DUNN CO. COMMUNITY HEALTH COALITION



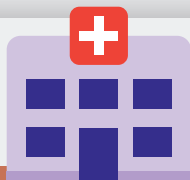
2015

The first Dunn County Health Needs Assessment (CHNA) is conducted.



2017

Visioning sessions led by a professional consultant are held, and the year culminated in a Coalition Design Day Conference attended by more than 50 community members.



2019

Health Dunn Right prepares to officially launch in September.

2016



The Department of Public Health formally requests the Community Foundation of Dunn County (CFDC) to assist in the creation of a Health Coalition, which is established to tackle the top issues affecting people in Dunn County.

2018



A Health Coalition Meeting is held on August 27 to share updates and inform attendees of an online portal created to share information.

CHNA & CHIP OVERVIEW

A community health needs assessment refers to a state, tribal, local, or territorial health assessment that identifies key health needs and issues through systematic, comprehensive data collection and analysis. Within Dunn County 17 health priorities were identified, and this assessment focuses on the top nine. The CHNA process included a variety of data collection methods in order to connect with several different demographic groups in the community and to develop a thorough understanding of health issues facing the Dunn County residents. These



STEERING COMMITTEE REPRESENTATIVES

Arbor Place | Community Foundation of Dunn Co. | Dunn Co. Health Dept. | Extension-Dunn Co. | Mayo Clinic Health System-Red Cedar | Marshfield-Dental Clinic | Prevea Health | United Way of Dunn Co.

methods included: primary qualitative data collection through an online and hard copy community health survey, survey outreach with underrepresented demographic groups, and stakeholder conversations with underrepresented groups to validate responses. Secondary, quantitative community health data was collected based on the measures recommended in the Wisconsin Association of Local Health Departments and Boards (WALHDAB) core dataset and the State Health Plan. This full range of data is detailed in this report and will also be utilized by the emerging local health coalition Health Dunn Right. Representatives from the partnership met bi-monthly

from November 2018 through May 2019 to plan and implement the CHNA. The collaboration also allowed the community to participate in one comprehensive assessment rather than several CHNAs conducted each year by different organizations. The shared CHNA reduces duplication of efforts, costs, promotes a greater coordination of resources, and results in a potentially more significant impact on the health needs of the communities.



IN THIS DOCUMENT, 9 KEY TOPICS ARE DISCUSSED

1. MENTAL HEALTH
2. HEALTHY ENVIRONMENT
3. CHRONIC DISEASE
4. ALCOHOL, NICOTINE, & DRUGS
5. SAFE & QUALITY HOUSING
6. FAMILY HEALTH
7. TRANSPORTATION
8. ORAL HEALTH
9. HEALTHY NUTRITION

2019 CHNA TIMELINE



MARCH

A second Dunn County Health Needs Assessment is conducted through a survey targeting Dunn County residents.



MAY 20

Creation of the Coalition Committee. This committee will adopt a model of operation for the Coalition and an MOU (Memorandum of Understanding) for Coalition members.



SEPTEMBER 17

The official Health Dunn Right Coalition launch! This event will include updates from the Steering Committee and Action Teams.

APRIL-JUNE



The County Health Needs Assessment team compiles, analyzes and prepares data from the survey.

JULY 16



Results of the 2019 County Health Assessment to be unveiled during the Health Coalition Conference at the UW-Stout Memorial Student Center. Action teams and community input during this meeting will assist in the creation of a County Health Improvement Plan (CHIP) based on critical health needs in Dunn County.



DUNN COUNTY DEMOGRAPHICS

COMMUNITY PROFILE

Dunn County is comprised of one city (Menomonie), and seven villages (Boyceville, Colfax, Downing, Elk Mound, Knapp, Ridgeland and Wheeler). It is located in northwest Wisconsin. The county is bordered by Barron County to the north, Chippewa and Eau Claire counties to the east, Pepin County to the south, and St. Croix and Pierce Counties to the west. In 2018, the county population was estimated at 45,131 approximately 61% of which is rural. Twenty-one percent of Dunn County households reported their income was between \$50,000 and \$74,999. The median age in the county is 34.2 with the largest age

distribution (13%) between 20-24 years of age. Ninety-three percent of Dunn County residents over 25 years old have graduated high school or attained their GED. The county seat is located

in the city of Menomonie, which has a population of 16,264. Menomonie is approximately 60 miles east of the Twin Cities and 30 miles west of Eau Claire, WI. The county is served by four primary public K-12 school districts with an additional seven school districts serving across county lines into Dunn County. Additional educational opportunities can be found at Wisconsin's polytechnic university UW-Stout and Chippewa Valley Technical College. Economic drivers in the county include manufacturing, health care, educational services, transportation and warehousing and production agriculture. A single hospital is

located in Dunn County: Mayo Clinic Health System—Red Cedar in Menomonie. Prevea Health and Marshfield Clinic also operate medical clinic sites and Marshfield Clinic operates a federal qualified health center-dental clinic in Menomonie.

DUNN COUNTY DEMOGRAPHICS

(2013-2017 ESTIMATE)

MEDIAN HOUSEHOLD INCOME \$54,605

SEX 49% F | 51% M

% OF POPULATION IN POVERTY 12%

% HOUSING BUILT BEFORE 1980 50%

2017 UNEMPLOYMENT RATE 3.3%

POPULATION GROWTH RATE 2013-17 2%

HOUSEHOLDS SPENDING >30% OF INCOME ON HOUSING COSTS 26.6%

DUNN COUNTY RACIAL DISTRIBUTION

(2013-2017 ESTIMATES)

WHITE 94.7%

ASIAN 2.6%

HISPANIC OR LATINO 1.4%

TWO OR MORE RACES 1.9%

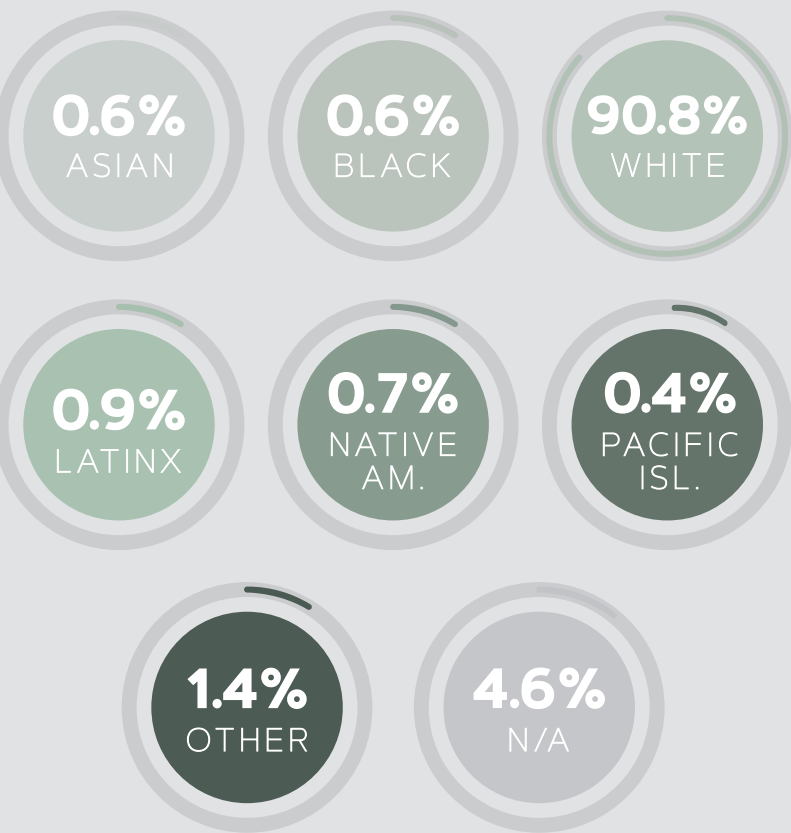
BLACK OR AFRICAN AMERICAN 0.5%

AMERICAN INDIAN & ALASKA NATIVE 0.4%

RESPONDENT DEMOGRAPHICS

Of the 45,368 Dunn County Residents, 978 participated in the survey with 690 answering our demographic questions. The first few questions on our survey ask for demographic information. Characteristics such as race, ethnicity, gender, age, and education level can all influence a respondent's answer. It is important to know exactly who is responding to the survey in order to analyze the data more accurately.

RESPONDENT ETHNICITY



OF THE 45,368 DUNN COUNTY RESIDENTS, 978 PARTICIPATED IN THE SURVEY WITH 690 ANSWERING OUR DEMOGRAPHIC QUESTIONS, WITH 90.8% OF RESPONDENTS BEING WHITE.

THE MAJORITY OF SURVEY RESPONDENTS CAME FROM THE 45-64 YEAR OLD RANGE, WHICH MADE UP 42% OF THE RESPONDENTS.

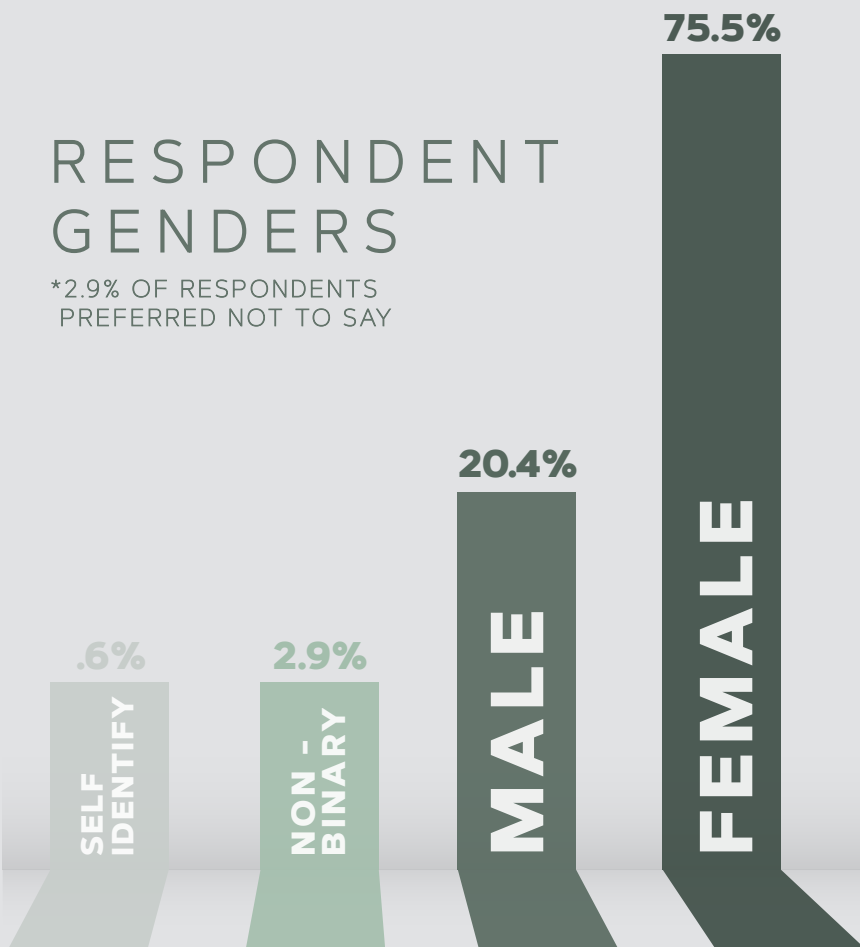


DEMOGRAPHICS CONT.

Gathering and understanding our respondents' demographic groups puts their responses in context and reflects whether or not the results came from a diverse enough pool of residents to avoid bias in our CHNA/CHIP. Connecting demographic groups to their responses lets us see who specifically is affected by a health area and where our efforts need to be focused.

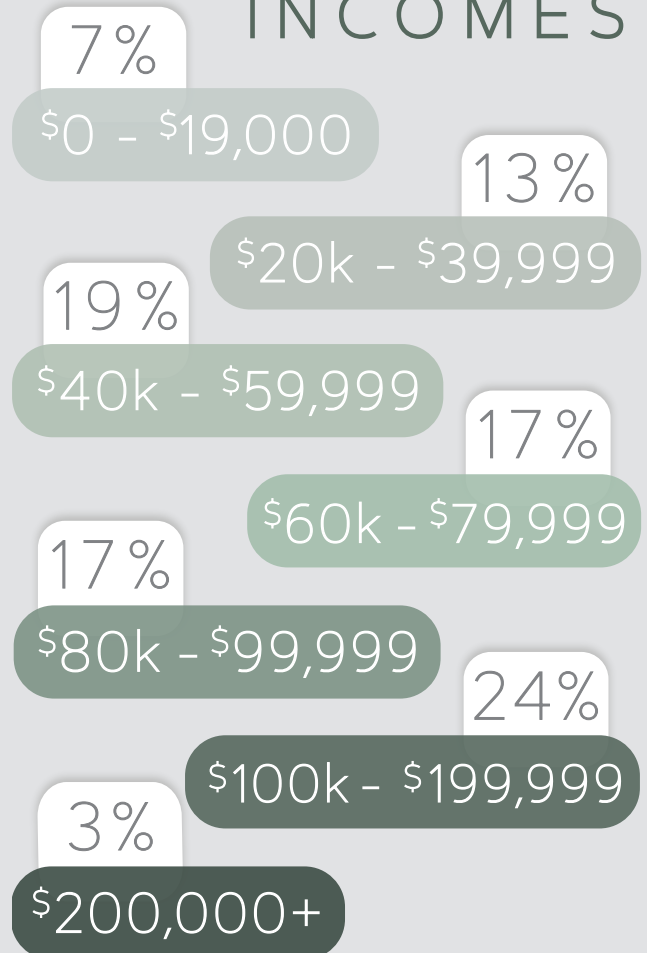
RESPONDENT GENDERS

*2.9% OF RESPONDENTS
PREFERRED NOT TO SAY



THE MAJORITY OF RESPONDENTS WERE FEMALE AND WITH THE MOST FREQUENTLY REPORTED HOUSEHOLD ANNUAL INCOME OF AT LEAST \$100,000.

RESPONDENT INCOMES



60% OF SURVEY RESPONDENTS REPORTED HAVING ACHIEVED A BACHELOR'S DEGREE OR HIGHER.



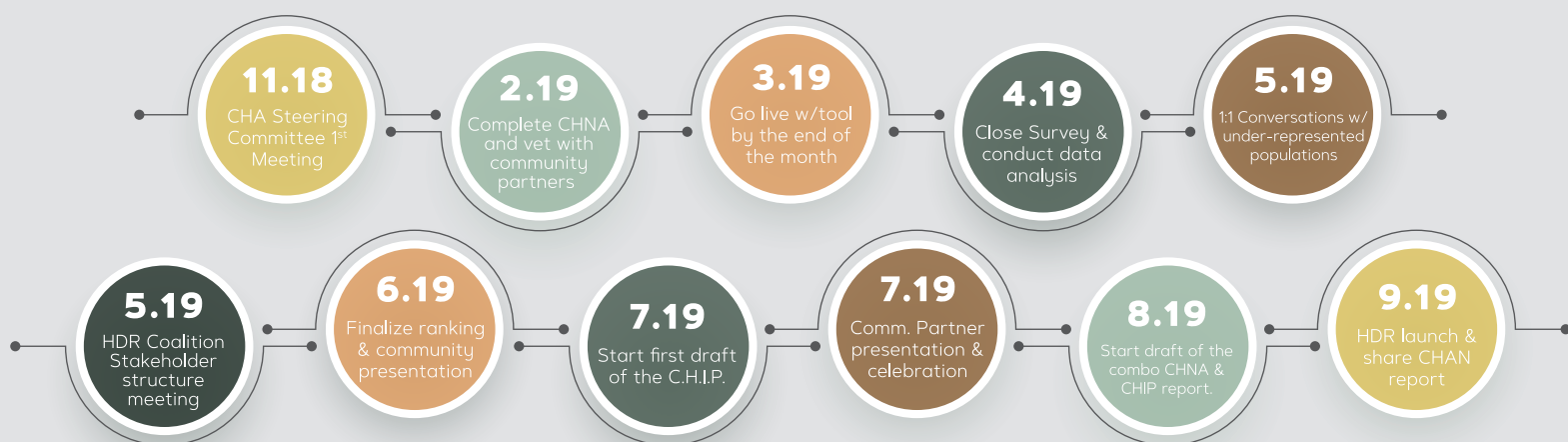
DATA COLLECTION METHODS

COMMUNITY SURVEYS

The survey was extensively modified from the 2015 tool to incorporate initial community feedback, expand health topics, gauge health education needs, and gather more data regarding perceptions of community strengths, weaknesses, and negative personal impacts of the health topics. At the beginning of the community health assessment process, Steering Committee partners conducted listening

sessions with the local agricultural community. This process informed the need to include new questions around social health factors including family health and social isolation/support. It also affirmed the need to include questions regarding access to clinical mental and physical health care and health behaviors around alcohol and other drugs.

2018-19 SURVEY TIMELINE



The modified community health survey was distributed to residents throughout Dunn County in March and April of 2019. The link to the web survey was widely distributed through the networks of each of the partner and community. Community organizations included: Aging and Disability Resource Center-Senior Nutrition Sites, local churches and food pantries, Extension-Dunn County, Eau Claire Area Hmong Mutual Assistance Association, The Bridge to Hope, the Dunn County Jail, the Dunn County Criminal Justice Collaborating Council, El Centro, town/village clerks and others. The survey

launch was announced by a press release and advertised in local newspapers, social media, and fliers throughout the county. Special effort was made to ensure the survey was available to underrepresented groups who can suffer the most from health disparities. Hard copy and print surveys were also made available throughout the county.



SURVEYS CONT.

A total of 978 Dunn County residents completed the survey with 690 answering our demographic questions. While survey respondents did tend to be older and have more formal education than the county median, they represented a wide range of income and educational levels, age, and household size. Twenty-nine percent of the survey respondents were from Menomonie, however all towns and villages were represented. The survey focus areas were framed by the Wisconsin State Health Plan and the Robert Wood Johnson Foundation's identified social

determinants of health. They were mental health, healthy environment, chronic disease, alcohol abuse, tobacco/nicotine use, safe & quality housing, family health, healthy nutrition, substance abuse, transportation, oral health, physical activity, community safety, serious infections, sexual health, social support and health at work. Definitions for each of the health topics were provided (see appendix C) in addition to defining the two key terms "access" and "resources".

Access: The word access will be used often and refers to access to services including:

- › Entry into the health care system
- › Ability to get to a place where health care services are provided
- › Finding a health care provider you trust and feel comfortable talking to

Resources: Resources are a source of supply, support, or aid that can be easily used when needed.

Survey respondents were asked the following for the 17 health topics:

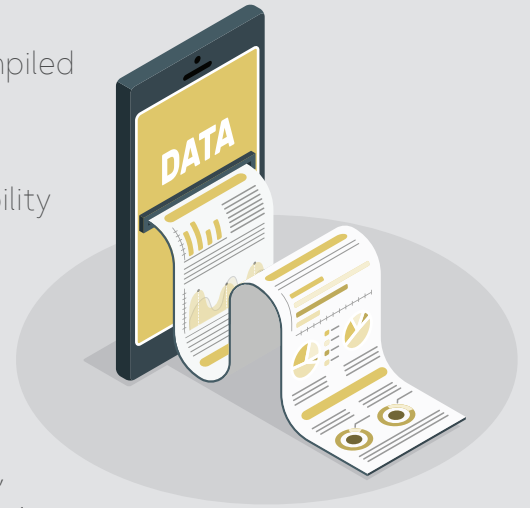
- › "This issue negatively affects me or someone close to me."
- › "Do you believe access to [health topic] is a strength or a weakness in Dunn Co.?"
- › Options were titled Major Weakness, Moderate Weakness, Neutral, Moderate Strength, Major Strength and Not Enough Info

If the respondent said that they perceived the health topic as a major or moderate weakness they were then asked to answer 3 types of questions:

- › Yes/no questions asking if they had difficulty accessing [health area] in the past, and if they believed that the majority of Dunn Co. residents had difficulty accessing [health] area.
- › Multi-select questions regarding their perceptions on barriers to access and areas of education that they would benefit from.
- › Open ended questions about the respondents' perception of causes and solutions to the perceived weakness in the identified health area.

ANALYSIS OF SECONDARY DATA

After the survey results were analyzed, local health data was compiled from a variety of sources based on the measures recommended by the Wisconsin Association of Local Health Departments and Boards. The core dataset was then modified based on the availability of Dunn County specific data. Dunn County does not have access to local representative data from the Behavioral Risk Factor Surveillance System or the Youth Risk Behavior Surveillance System due to incomplete local participation on the designated timeline. Sources included: County Health Rankings, US Census, government reports, Centers for Disease Control and Prevention, county department reports, Wisconsin Department of Health Services statistics, schools, and other publicly available sources.



PRIORITIZING & RANKING DATA

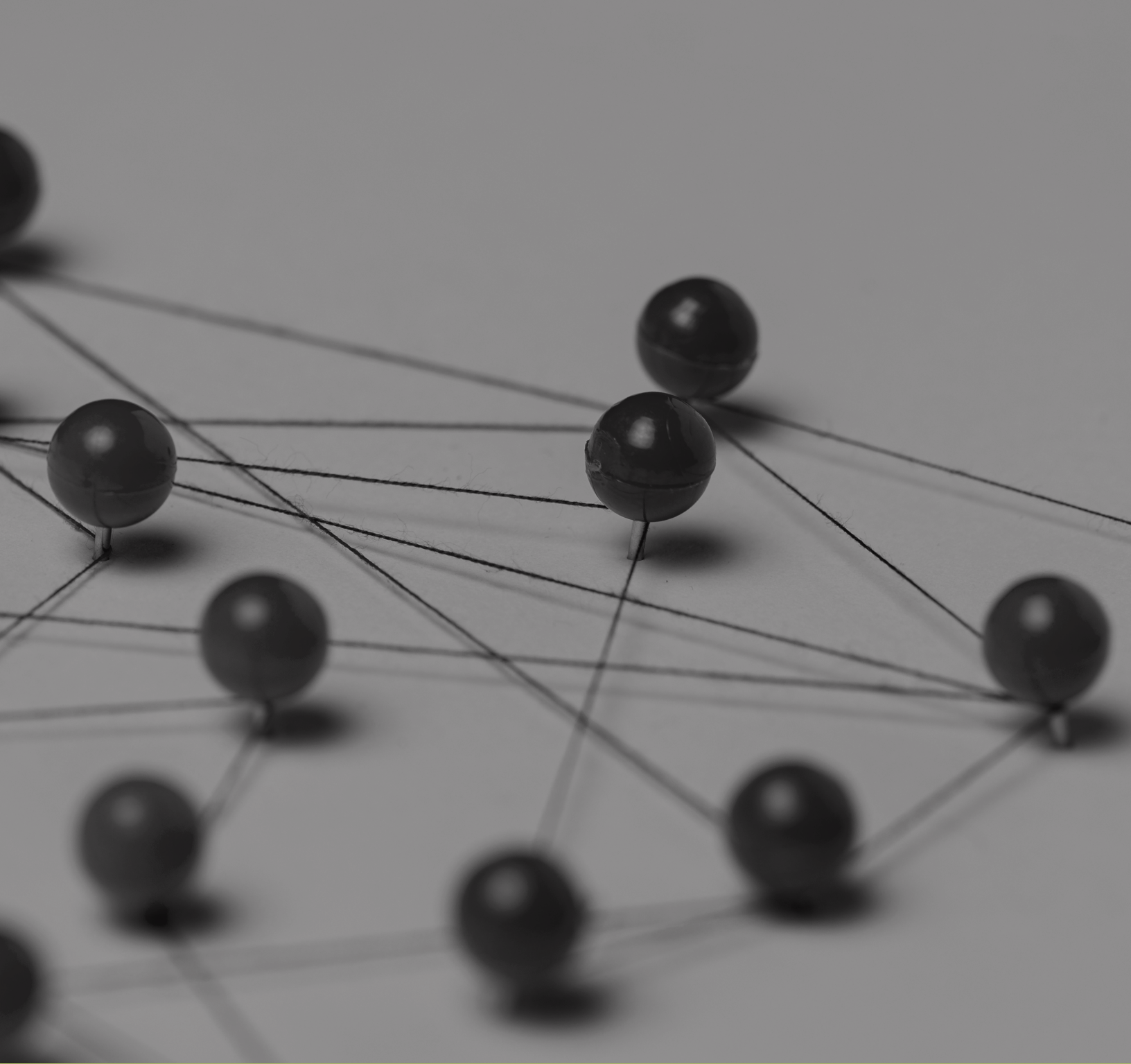
Health topics were prioritized based on the interaction between the survey responses and state and national data. One last decision was made by the Steering Committee to aggregate the topics of alcohol abuse, tobacco/nicotine use and substance abuse under the umbrella topic Alcohol, Nicotine, and Drugs (AND).

› Each topic was ranked based on the percentage of respondents that identified a negative personal or family affect. 17 points were assigned to the health topic with the highest percentage of respondents identifying being negatively affected by the health topic, with one point assigned to the health topic with the lowest percentage of respondents identifying being negatively affected by the health topic.

› The topics were then ranked based on the percentage of respondents that identified the topic as a major or moderate weakness, again with 17 signifying the largest percentage of respondents identifying it as a weakness and 1 being the lowest.

› The ranks were then added together to give a total score that ranged from 33 to 4.

› Finally, the scores were compared by indicator to state and national indicators where available.



TOP RANKED HEALTH AREAS

1. MENTAL HEALTH

Mental Health focuses on achieving and maintaining a healthy mental outlook. Mental Health resources includes services and support to guide how we think, act, and feel as we handle stress, relate to others, and make choices. This can include depression, anxiety, PTSD, self-harm, and suicide.

“

In my own experience, I don't have the money to visit a doctor in order to renew my mental health prescriptions. I do not make enough money to purchase health insurance, so I have to save up for doctor's visits.

Comment from 2019 CHNA Survey

“

For the average person who works and does not qualify for any assistance, counseling can be very expensive. I believe this is why self-medicating with drugs and alcohol is so prevalent.

Comment from 2019 CHNA Survey

63%

Dunn County residents or someone they know who are negatively affected by mental health

78%

Dunn County residents who don't believe the majority has access to mental health resources

› **11%** OF DUNN COUNTY RESIDENTS REPORT FREQUENT MENTAL DISTRESS. **(VS. 12% WI)**

.....

› **650:1** RATIO OF DUNN COUNTY RESIDENTS TO MENTAL HEALTH PROVIDERS. **(530:1 WI)**

.....

› PER **100,000** DUNN COUNTY RESIDENTS, **37** HAVE HAD SELF-INFLICTED HOSPITALIZATIONS **(VS. 49 WI)**

Check out pg. 38 for our goals and objectives to Improve the management of Mental Health for Dunn County Residents.

2. HEALTHY ENVIRONMENT

Healthy Environment focuses on the things in our water, air and food that can make us sick. Topics include: safe drinking water from personal wells or city taps, safe lakes and rivers for recreation, clean air to breathe, raw and prepared foods that are safe to eat.

› **16%** OF PRIVATE WELLS TESTED EXCEEDED STANDARDS FOR NITRATE IN DRINKING WATER
(VS. 10% WI)

.....

› **400 MILES** OF STREAM AND RIVERS IN DUNN COUNTY ARE POLLUTANT IMPAIRED.

“

The Red Cedar River is a major hazard in our community. It needs to be brought back to the way it was. The pollution and chemicals has to make it unsafe. The air even gets pollution from the lake.

Comment from 2019 CHNA Survey

47%

Dunn County residents that said a healthy environment is a major or moderate weakness for the community

Check out pg. 39 for our goals and objectives to Improve the management of a healthier environment for Dunn County Residents.

Dunn County residents or someone they know who are negatively affected by this issue

48%

“

All of us need to do things, even if they are small things, to improve our environment. Promote and encourage residents to learn and practice urban conservation. We all blame farmers and their crop runoff for the state of the groundwater and lakes, we need to begin to look inward and improve from the inside of the city out.

Comment from 2019 CHNA Survey

3. CHRONIC DISEASE

Chronic disease involves illnesses that last a long time, usually cannot be cured, and often result in disability. Chronic Disease includes health concerns such as arthritis, cancer, diabetes, high blood pressure, chronic obstructive pulmonary disease (COPD) and obesity.

28%

Dunn County residents that said chronic disease is a major or moderate weakness for the community

Dunn County residents or someone they know who are negatively affected by this issue

66%

I am fairly active individual and I am unaware of the different resources available to an individual. Available programs would benefit from having better marketing and exposure to the community.

Comment from 2019 CHNA Survey

“

I live in a more rural area and there isn't a lot of safe places to walk, ride a bike, etc. that don't require me to drive to that place first.

Comment from 2019 CHNA Survey

› **38%** OF DUNN COUNTY ADULTS (>20 YEARS OLD) ARE OBESE (BMI ≥ 30KG/M2) **(VS. 31% WI)**

› **9%** OF DUNN COUNTY ADULTS (>20 YEARS OLD) ARE DIAGNOSED WITH DIABETES **(VS. 9% WI)**

› **406** NEW CANCER DIAGNOSES PER **100,000** PEOPLE IN DUNN COUNTY **(VS. 468 WI)**

Check out pg. 40 for our goals and objectives to prevent chronic disease in Dunn County Residents.

4. ALCOHOL, NICOTINE, & DRUGS

This health area was renamed from 'A.O.D.A' to 'AND' to encompass all types of addictive substances.

AND focuses on how much and how often substances such as alcohol, drugs, and nicotine products are consumed in Dunn County. Topics covered include binge drinking, underage drinking, driving under the influence, illegal substances, misuse of prescription drugs, tobacco products, and e-cigarettes.

“

It isn't just the college that is the problem, so many of the adults in the community drink a lot too. While picking up children from practice or school, there are parents who are obviously intoxicated, and picking up their child to then drive them home.

Comment from 2019 CHNA Survey

“

The number of cases of substance abuse has been on the rise, largely due to meth, but the resources have not grown along with the problem

Comment from 2019 CHNA Survey

Check out pg. 41 for our goals and objectives to reduce AND consequences for Dunn County Residents.

› **44%** OF DRIVING DEATHS ASSOCIATED WITH ALCOHOL
(VS. **36% WI**)

.....

› **10.3%** OF DUNN COUNTY 7-12TH GRADERS USED TOBACCO PRODUCTS IN THE LAST 30 DAYS
(VS. **6.2% WI**)

Dunn County residents or someone they know who are negatively affected by alcohol abuse

41%

Dunn County residents that said Substance Abuse is a major or moderate weakness for the community

39%

› **20** SUSPECTED OPIOID DEATHS OF DUNN COUNTY RESIDENTS IN 2018

.....

› **17%** OF DUNN COUNTY MOTHERS REPORTED HAVING SMOKED DURING PREGNANCY
(VS. **12% WI**)

5. SAFE & QUALITY HOUSING

Safe & Quality Housing focuses on affordable housing that can protect us from extreme weather and provide safe environments for families and individuals to live, learn, grow, and form social bonds.

› **46%** OF DUNN COUNTY HOUSES WERE BUILT IN OR BEFORE 1979
(VS. **62% WI**)

.....

› **19.2%** OF DUNN COUNTY HOMEOWNERS SPEND **>35%** OF INCOME ON HOUSING COSTS
(VS. **18.7% WI**)

“

There is a lot of deteriorating housing and properties in Dunn County. Some existing programs have helped but not nearly enough. The senior citizen population can't afford or manage home maintenance needed on their older homes, and many people live in deteriorating hard-to-heat trailer homes because they are all they can afford.

Comment from 2019 CHNA Survey

Dunn County residents that said Safe & Quality Housing is a major or moderate weakness for the community

46%

Check out pg. 42 for our goals and objectives for more Safe & Quality Housing for Dunn County Residents.

27%

Dunn County residents or someone they know who are negatively affected by lack of Safe & Quality Housing

“

The biggest issue in our community in regards to housing is the lack of availability or even existence of affordable housing. We do not need more large apartment complexes that sport \$1000 monthly rents. I work for more than minimum wage and would not consider this affordable. We need housing that caters to all income ranges.

Comment from 2019 CHNA Survey

6. FAMILY HEALTH

Family Health focuses on relationships between family members which may impact one's physical, mental, and emotional health. Family Health includes: family relationships and isolation, preventative health care (i.e. regular check-ups), information on human growth & development, adapting when something bad happens (also known as resilience) and child & elder care.

› **15-20%** OF DUNN COUNTY RESIDENTS HAVE EXPERIENCED 4 OR MORE ADVERSE CHILDHOOD EVENTS (ACEs).
(VS. 25% WI)

.....

› **14.7%** OF DUNN COUNTY RESIDENTS ARE 65 OR OLDER.
(VS. 15.7% WI)

Dunn County residents that said Family Health is a major or moderate weakness for the community

25%

32%

Dunn County residents or someone they know who are negatively affected by poor Family Health.

“

It is very difficult to get parents to attend the available parenting classes in Dunn County. They either don't know about them in the first place or cannot get the time off of work to make it to a class time. There needs to be more promotion of these programs. Making these classes available online on your own time would be very helpful for busy or single parents.

Comment from 2019 CHNA Survey

“

Dunn County needs a facility for those with dementia that has trained professionals that can provide care and assistance. This will take the pressure off of family members who are stuck in an unsustainable caretaker position.

Comment from 2019 CHNA Survey

7. TRANSPORTATION

The Transportation health area focuses on having access to reliable transportation (owned, shared, or public) to get people to where they need to go, when they need to get there.

› **37.1%** OF DUNN COUNTY RESIDENTS TRAVEL 25 MILES OR MORE BETWEEN HOME AND WORK.
(VS. 28% WI)

.....

› **32%** OF DUNN COUNTY RESIDENTS THAT COMMUTE DRIVE MORE THAN 30 MINUTES.
(VS. 27% WI)

26%

Dunn County residents or someone they know who are negatively affected by Transportation issues.

“

Car ownership is an unfortunate necessity in rural America. Owning a reliable car requires not only having the means to purchase it, but to also be able to pay for any unexpected repairs and regular maintenance. Many residents just cannot afford this. There needs to be more public transport that is affordable and consistent.

Comment from 2019 CHNA Survey

Comment from 2019 CHNA Survey

Dunn County residents that said Transportation is a major or moderate weakness for the community

44%

8. ORAL HEALTH

The Oral Health area focuses on keeping all Dunn County residents' teeth, gums and mouths healthy. Topics include: brushing and flossing, regular check-ups at the dentist (every 6 months) and daily fluoride supplements.

Dunn County residents that said Oral Health is a major or moderate weakness for the community

25%

29%

Dunn County residents or someone they know who are negatively affected by poor Oral Health.

› **79%** OF DUNN COUNTY RESIDENTS ON A PUBLIC WATER SUPPLY IN 2015 HAD FLUORIDATED WATER FROM THEIR TAP.
(VS. 88% WI)

.....

› **3100:1** RATIO OF DUNN COUNTY RESIDENTS TO A DENTIST.
(VS. 1469:1 WI)

“

Dental care is expensive without insurance no matter where you live.

For some, even the co-pays or deductibles are not affordable. A large majority of residents do not have the financial funds or access to adequate health insurance to get the dental care they need. The clinics for low income people always have waiting lists.

Comment from 2019 CHNA Survey

“

Oral care needs to be made more affordable. In my own experience it's a slap in the face to step into a dental office and see all of the renovations and cosmetic improvements they are making knowing that as soon as I leave I will get hit with a hefty bill that I have to pay out of pocket.
(I cannot afford health & dental insurance)

Comment from 2019 CHNA Survey

Local Data Note: The County Oral Health WI Surveillance System report is from 2011 and not used in this report.

9. HEALTHY NUTRITION

The Healthy Nutrition health area focuses on Dunn County residents having access to enough healthy, nutritious food from infancy through old age. Topics covered include availability of grocery stores, and affordability of food that is considered nutritious.

“

Residents cannot afford healthy food at most available grocery stores in Dunn County. The stores in Menomonie are very expensive and we have less store options than Eau Claire. Rural Dunn County has very limited choices when it comes to where to purchase groceries, most of which are unhealthy.

Comment from 2019 CHNA Survey

Dunn County residents that said Healthy Nutrition is a major or moderate weakness for the community

30%

› **34%** OF DUNN COUNTY YOUTH WERE ELIGIBLE FOR FREE OR REDUCED LUNCHES IN 2018.

(VS. 37% WI)

.....

› **11%** OF POLLED DUNN COUNTY RESIDENTS EXPERIENCED FOOD INSECURITY IN 2016.

(VS. 11% WI)

28%

Dunn County residents or someone they know who are negatively affected by not having Healthy Nutrition

“

I am sure I am not alone in saying that I am not very knowledgeable about nutrition or making healthy food that my kids will eat. It always seems like the healthier the food, the more expensive.

Comment from 2019 CHNA Survey



CHIP

(Community Health Improvement Plan)

From the results of our 2019 assessment, we've identified the five biggest health priorities within our community. In this section we have developed goals and objectives to address each of these health area needs and help create measurable change within our community.



MENTAL HEALTH

CHIP GOAL

IMPROVE MENTAL HEALTH AND WELLNESS FOR
DUNN COUNTY RESIDENTS

OBJECTIVES TO IMPROVE MENTAL HEALTH (MH)

1. MAKE MENTAL HEALTH SERVICES MORE AVAILABLE TO RESIDENTS

- › Identify community gaps in mental healthcare accessibility
- › Train volunteers to help with outreach & mental health crisis interventions.
- › Create a Mental Health Coalition that will manage mental health services with existing health facilities.
- › Identify incentives to keep mental health care providers in Dunn County to increase accessibility.
- › Establish grant funding to provide MH services at low cost to residents.

3. MENTAL HEALTH RESOURCE MAP FOR NAVIGATING THE MH SYSTEM

- › Identify current local mental health and wellness offerings in Dunn County.
- › Identify gaps in community mental health resources within Dunn County.

2. EARLY INTERVENTION & PREVENTION OF MH ISSUES

- › Create opportunities for social events, activities and exercise to promote mental wellness.
- › Provide early intervention resiliency programs in the Dunn County Schools & community supports.
- › Provide free community screening services to identify mental health needs.

4. IMPROVE COMMUNITY AWARENESS AND OUTREACH FOR MH & WELLNESS

- › Promote community events, groups, classes and programs offered locally on social media, our website, or print.
- › Encourage help-seeking behaviors by educating the public on mental health.
- › Promote mental health education at community out-reach services like churches, schools, social groups, and primary care visits.

HEALTHY ENVIRONMENT

CHIP GOAL

DUNN CO. RESIDENTS WILL TRANSITION TO HEALTHY URBAN & RURAL LAND USE PRACTICES & POLICIES TO ENSURE SAFE AIR & WATER QUALITY

OBJECTIVES FOR A HEALTHIER ENVIRONMENT

1. EXPAND CITIZEN EFFORTS TO PROMOTE SAFE AIR & WATER QUALITY

- › Gather current ground water and air quality data and make available to the public.
- › Promote Dunn County's clean water campaigns
- › Test wells randomly throughout the county for hazards.
- › Educate public on water regulations.
- › Identify air quality hazards within Dunn County and place regulations on potential air quality threats (burning, sand mines, industrial pollution).
- › Decrease Dunn County's carbon footprint by improving public transportation systems or offering incentives to use environmentally friendly transportation methods (biking, walking, carpooling).

2. COLLABORATION BETWEEN DUNN COUNTY SERVICES

- › Gather data on the quality of the lake/river water, monitor quality and make the data available to the public.
- › Identify and analyze the parks and other community facilities. What shape they are in, who uses them, where they are, and identify under-served areas.
- › Spread the use of solar power and other renewable energy sources into parks, trails, and public facilities.
- › Work with the parks and recreation department to improve the access and network of trails for biking and walking.
- › Establish neighborhood volunteer groups to keep parks clean, safe, and beautiful.



CHRONIC DISEASE

CHIP GOAL

DECREASE INCIDENCE OF CHRONIC DISEASE
IN DUNN COUNTY RESIDENTS.



OBJECTIVES TO PREVENT CHRONIC DISEASE

1. COMMUNITY AWARENESS OF PROGRAMS FOR HEALTHY LIFESTYLE EDUCATION

- › Identify current local health/wellness offerings related to diabetes prevention.
- › Identify community gaps in chronic disease education.

2. ENGAGE WITH RESIDNETS TO PROVIDE EDUCATION ON HEALTHY EATING & EXERCISE

- › Create shared local health/wellness offerings on a shared calendar/portal.
- › Create community health programs based on identified gaps.

3. PROMOTE PREVENTION AND SELF-MANAGEMENT SKILLS & STRATEGIES

- › Create weekly social media posts about health programs and wellness tips.





AND

ALCOHOL, NICOTINE, & DRUGS

CHIP GOAL

REDUCE THE PREVALENCE OF AND
RELATED CONSEQUENCES

OBJECTIVES TO REDUCE 'AND' CONSEQUENCES

1. WORK TO REDUCE THE AMOUNT OF ALCOHOL & DRUG RELATED INCIDENTS BY 1%

- › Increase access to a full continuum of family-centered treatment services throughout County.
- › Create a central resource (website, calendar, portal) with updated AND related resources.

3. DECREASE THE NUMBER OF HIGH RISK ADULTS WHO REPORT BINGE DRINKING

- › Establish sober zones & increase safe houses for recovery.
- › Provide alcohol free event alternatives.
- › Identify those at risk for alcohol abuse.
- › Increase support for families working with recovery.
- › Talk openly about alcohol abuse through educational programs offered at the high school and collegiate level.

2. IMPLEMENT PROGRAMS, EVENTS & SERVICES FOR PREVENTION & RECOVERY

- › Promote prevention by offering youth education and support groups.
- › Educate public on prevalence of AND within Dunn county and how they can help intervene.
- › Offer safe pop-up sites to dispose of unused opioids and other medications.

4. IMPROVE RESOURCES REGARDING 'AND'

- › Identify current local resources available to the public
- › Identify gaps in resources available to the public for AND related issues.
- › Create community health programs based on identified gaps.
- › Create a central resource (website, calendar, portal) with updated AND educational opportunities for the public.

SAFE & QUALITY HOUSING

CHIP GOAL

IMPROVE HOUSING QUALITY BY MAKING HOMES MORE SAFE, ACCESSIBLE, AND AFFORDABLE.



OBJECTIVES FOR SAFE & QUALITY HOUSING

1.

ESTABLISH A HOUSING DEVELOPMENT FUND TO OFFER INCENTIVES FOR RESIDENTS TO BUILD OR PURCHASE HOUSING

- › Address concerns for affordable, safe, and quality housing with the city council
- › Establish a housing development fund.
- › Establish a housing council that will work with local government and stakeholders. This will promote development and support for affordable, safe and quality housing
- › Identify existing options for Safe & Quality Housing.

2.

CREATE COMMUNITY AWARENESS ABOUT THE IMPACT OF AFFORDABLE HOUSING ON DUNN COUNTY

- › Promote incentives to those that offer affordable housing
- › Create and promote educational programs for residents/developers interested in building or providing affordable housing.

3.

EMPOWER TENANTS & LANDLORDS TO ADVOCATE FOR QUALITY HOUSING

- › Inspect rentals and create reports regarding pests, garbage/debris, and health concerns.
- › Lead/start community conversations about the state of housing within Dunn County.



APPENDIX A

2019 DUNN COUNTY HEALTH NEEDS ASSESSMENT SURVEY

BY TAKING THIS SURVEY, YOU WILL;

- 1) Share your thoughts and opinions on the health needs of Dunn County
- 2) Help inform the upcoming Dunn County Community Health Improvement Plan

Information gathered from the survey will be used to help determine how to best address the needs of Dunn County. By taking this survey you help shape the priorities in Dunn County! Let your voice be heard!

SAVE THE DATE

The results will be shared at a community event on July 16th, 2019. Members of the community are invited and strongly encouraged to attend the July 16th event! This will be a chance to learn about the results of the survey and discuss how to use the information to create a health improvement plan for Dunn County. *All responses will be kept CONFIDENTIAL and in no way will be linked back to you.*

IMPORTANT DEFINITIONS

The word access will be used often and refers to access to services including:

- 1.) Gaining entry into the health care system (usually through insurance coverage)
- 2.) Ability to get to a place where health care services are provided (close to your home)
- 3.) Finding a health care provider you trust and feel comfortable talking to (personal relationship)

Resources are a source of supply, support, or aid that can be easily used when needed.

ESTIMATED TIME TO COMPLETE SURVEY: 8 - 25 MINUTES

Option to take the survey online:

https://uwex.co1.qualtrics.com/jfe/form/SV_eUKj21ONLWLRDZr

1.) Are you 18 years or older? Please select one option.

- ☐ Yes
☐ No (If no, please end survey)

2.) Are you a resident of Dunn County? Please select one option.

- ☐ Yes
☐ No (If no, skip to question 3)

Please provide your Zip Code: _____

Township/Village/City: _____

3.) If you are not a resident of Dunn County, please describe your connection to Dunn County briefly:

Health Area: Healthy Nutrition

Healthy Nutrition focuses on always having enough healthy, nutritious food from infancy through old age.

1.) This issue negatively affects me or someone close to me.

Please select one: ☐ Yes ☐ No

2.) Do you believe access to Healthy Nutrition is a strength or weakness in Dunn County?

- ☐ Major Weakness
☐ Moderate Weakness
☐ Neutral
(If checked, skip to next health area: Physical Activity)
☐ Moderate Strength
(If checked, skip to next health area: Physical Activity)
☐ Major Strength

(If checked, skip to next health area: Physical Activity)

☐ Not enough Info

(If checked, skip to next health area: Physical Activity)

3.) Have you had any problems accessing Healthy Nutrition in the last three years?

- ☐ Yes
☐ No (If no, skip to question 5)

4.) If yes, what were your barriers to accessing Healthy Nutrition? Please select all that apply.

- ☐ Time
☐ Money
☐ Transportation
☐ Not a priority to me
☐ Discrimination
☐ Embarrassed (and/or stigma)
☐ Don't know how to make healthy foods
☐ Other, please list: _____

5.) Do you believe that the majority of people in Dunn County have access to Healthy Nutrition resources when needed?

- ☐ Yes
☐ No
☐ Unsure

6.) What areas of Healthy Nutrition education would you benefit from? Please select all that apply.

- ☐ Breastfeeding
☐ Food Safety (canning, storage, temp, etc.)
☐ Eating on a budget
☐ Healthy fast food options
☐ Meal planning and prepping
☐ Other, please list: _____

OPTIONAL: In your experience, what are the reasons for the lack of access to Healthy Nutrition in your community? Please share below.

OPTIONAL: From your perspective, what are some solutions for increasing access to Healthy Nutrition in your community? Please share below.

Health Area: Physical Activity

Physical Activity focuses on ways to stay active in order to improve overall health. Activities include walking, biking, swimming, exercising, lifting weights, and/or team sports.

- 1.) This issue negatively affects me/someone close to me.
Please select one: ☐ Yes ☐ No
- 2.) Do you believe access to Physical Activity resources (bike trails, recreational areas, gyms, etc.) is a strength or a weakness in Dunn County? Please check one option below.
☐ Major Weakness
☐ Moderate Weakness
☐ Neutral
(If checked, skip to next health area: Alcohol Abuse)
☐ Moderate Strength
(If checked, skip to next health area: Alcohol Abuse)
☐ Major Strength
(If checked, skip to next health area: Alcohol Abuse)
☐ Not enough Info
(If checked, skip to next health area: Alcohol Abuse)
- 3.) Have you had any problems being Physically Active in the last three years?
☐ Yes
☐ No (If no, skip to question 5)
- 4.) If yes, what were your barriers to being Physically Active? Please select all that apply.
☐ Time
☐ Money
☐ A place to go
☐ Transportation
☐ Not a priority to me
☐ Discrimination
☐ Embarrassed (and/or stigma)
☐ Weather
☐ Other, please list: _____
- 5.) Do you believe that the majority of people in Dunn County are Physically Active?
☐ Yes
☐ No
☐ Unsure
- 6.) What areas of Physical Activity education would you benefit from? Please select all that apply.
☐ The impacts of physical activity on the brain & health
☐ Easy home exercises
☐ Resources to join team sports and group fitness classes in the area.
☐ Exercise plans to aid weight loss
☐ Exercise plans to maintain weight
☐ Exercise plans to aid weight gain
☐ Modified or adaptive exercises for different abilities
☐ Other, please list: _____

OPTIONAL: In your experience, what are the reasons for the lack of Physical Activity in your community? Please share below.

OPTIONAL: From your perspective, what are some solutions for increasing Physical Activity in your community? Please share below.

Health Area: Alcohol Abuse

Alcohol abuse focuses on how much and how often alcohol is consumed. Topics include:

- Binge and/or excessive drinking
- Underage drinking
- Providing alcohol to minors
- Operating a vehicle while intoxicated

- 1.) This issue negatively affects me/someone close to me.
Please select one: ☐ Yes ☐ No
- 2.) Do you believe access to Alcohol Abuse resources (rehabilitation, counseling, local support groups, etc.) is a strength or a weakness in Dunn County?
☐ Major Weakness
☐ Moderate Weakness
☐ Neutral
(If checked, skip to next health area Substance Abuse)
☐ Moderate Strength
(If checked, skip to next health area Substance Abuse)
☐ Major Strength
(If checked, skip to next health area Substance Abuse)
☐ Not enough Info
(If checked, skip to next health area Substance Abuse)
- 3.) Have you tried to access Alcohol Abuse resources in Dunn County in the past three years?
☐ Yes
☐ No (If no, skip to question 6)
- 4.) Were you able to access resources you were seeking?
☐ Yes (If yes, skip to question 6)
☐ No
- 5.) If no, what were your barriers to accessing Alcohol Abuse resources? Please select all that apply.
☐ Time
☐ Money
☐ Availability
☐ Transportation
☐ Discrimination
☐ Embarrassed (and/or stigma)
☐ Not a priority to me
☐ Other, please list: _____
- 6.) Do you believe that the majority of residents have access to Alcohol Abuse resources when needed?
☐ Yes
☐ No
☐ Unsure
- 7.) What areas of Alcohol Abuse education would you benefit from? Please select all that apply.
☐ The long-term impact that alcohol use can have on your health
☐ The role that heredity plays in developing problems with alcohol use
☐ Resources that can provide help

- ☐ The difference between low & high risk alcohol use
- ☐ How to talk to a loved one when concerned about their alcohol use
- ☐ Other, please list: _____

OPTIONAL: In your experience, why do you think there is an Alcohol Abuse problem in your community? Please share below.

OPTIONAL: From your perspective, what are some solutions for reducing the Alcohol Abuse problem in your community? Please share below.

Health Area: Substance Abuse

Substance abuse includes the use of illegal substances, such as marijuana, heroin, methamphetamine and the misuse of prescription drugs such as Oxycontin, Ritalin, and Vicodin.

- 1.) This issue negatively affects me/someone close to me.
Please select one: ☐ Yes ☐ No
- 2.) Do you believe access to Substance Abuse resources (such as drug rehabilitation services, educational classes, local support groups, etc.) is a strength or a weakness in Dunn County?
☐ Major Weakness
☐ Moderate Weakness
☐ Neutral
 (If checked, skip to next health area: Sexual Health)
☐ Moderate Strength
 (If checked, skip to next health area: Sexual Health)
☐ Major Strength
 (If checked, skip to next health area: Sexual Health)
☐ Not enough Info
 (If checked, skip to next health area: Sexual Health)
- 3.) Have you tried to access Substance Abuse resources in Dunn County in the past three years?
☐ Yes
☐ No (If no, skip to question 6)
- 4.) Were you able to access resources you were seeking?
☐ Yes (If yes, skip to question 6)
☐ No
- 5.) If no, what were your barriers to accessing Substance Abuse resources? Please select all that apply.
☐ Time
☐ Money
☐ Availability
☐ Transportation
☐ Discrimination
☐ Embarrassed (and/or stigma)
☐ Not a priority to me
☐ Other, please list: _____
- 6.) Do you believe that the majority of people in Dunn County have access to Substance Abuse resources when needed?
☐ Yes
☐ No
☐ Unsure
- 7.) What areas of Substance Abuse education would you benefit from? Please select all that apply.
☐ The long-term impact that drug use can have on your health

- ☐ How to recognize the signs & symptoms of drug use
- ☐ Resources that can provide help
- ☐ How to talk to a loved one when concerned about their drug use.
- ☐ How to talk to children about the risks of drug use.
- ☐ Safe storage of medications
- ☐ Other, please list: _____

OPTIONAL: In your experience, why do you think there is a Substance Abuse is a problem in your community? Please share below.

OPTIONAL: From your perspective, what are some solutions for reducing the Substance Abuse problem in your community? Please share below.

Health Area: Sexual Health

Sexual Health focuses on education and health care services that help maintain sexual health for people of all ages. This includes pregnancy planning and spacing, as well as the prevention of unintended pregnancy and sexually transmitted infections (STIs) such as chlamydia, HIV and gonorrhea.

- 1.) This issue negatively affects me/someone close to me.
Please select one: ☐ Yes ☐ No
- 2.) Do you believe access to Sexual Health resources (pregnancy planning, STI prevention, education, etc.) is a strength or a weakness in Dunn County?
☐ Major Weakness
☐ Moderate Weakness
☐ Neutral (If checked, skip to next health area: Tobacco/Nicotine Use)
☐ Moderate Strength (If checked, skip to next health area: Tobacco/Nicotine Use)
☐ Major Strength (If checked, skip to next health area: Tobacco/Nicotine Use)
☐ Not enough Info (If checked, skip to next health area: Tobacco/Nicotine Use)
- 2.) Have you tried to access Sexual Health resources in Dunn County in the past three years?
☐ Yes
☐ No (If no, skip to question 6)
- 3.) Were you able to access resources you were seeking?
☐ Yes (If yes, skip to question 6)
☐ No
- 4.) If no, what were your barriers to accessing Sexual Health resources? Please select all that apply.
☐ Time
☐ Money
☐ Availability
☐ Transportation
☐ Not a priority to me
☐ Discrimination
☐ Embarrassed (and/or stigma)
☐ Other, please list: _____
- 5.) Do you believe that the majority of people in Dunn County have access to Sexual Health resources when needed?
☐ Yes

- ☐ No
- ☐ Unsure

- 6.) What areas of Sexual Health education would you benefit from? Please select all that apply.
- ☐ Pregnancy and STI prevention (birth control,sexual health 101)
 - ☐ Pregnancy planning and spacing
 - ☐ How to talk with your children about sexual health
 - ☐ Age appropriate sexual health education
 - ☐ Healthy couple relationships
 - ☐ Other, please list: _____

OPTIONAL: In your experience, what are the reasons for the lack of Sexual Health resources in your community? Please share below.

OPTIONAL: From your perspective, what are some solutions for increasing Sexual Health resources in your community? Please share below.

Health Area: Tobacco/Nicotine Use

Tobacco/nicotine use includes cigarettes, chewing tobacco and E-cigarettes.

- 1.) This issue negatively affects me/someone close to me.
Please select one: ☐ Yes ☐ No
- 2.) Do you believe access to Tobacco/Nicotine Use resources (products and services to help quit tobacco/nicotine use, counseling, and/or local support groups) is a strength or a weakness in Dunn County?
 - ☐ Major Weakness
 - ☐ Moderate Weakness
 - ☐ Neutral
(If checked, skip to next health area: Chronic Disease)
 - ☐ Moderate Strength
(If checked, skip to next health area: Chronic Disease)
 - ☐ Major Strength
(If checked, skip to next health area: Chronic Disease)
 - ☐ Not enough Info
(If checked, skip to next health area: Chronic Disease)
- 3.) Have you tried to access Tobacco/Nicotine Use resources in Dunn County in the past three years?
 - ☐ Yes
 - ☐ No (If no, skip to question 6)
- 4.) Were you able to access the resources you were seeking?
 - ☐ Yes (If yes, skip to question 6)
 - ☐ No
- 5.) If no, what were your barriers to accessing Tobacco/Nicotine Use resources? Please select all that apply.
 - ☐ Time
 - ☐ Money
 - ☐ Availability
 - ☐ Transportation
 - ☐ Not a priority to me
 - ☐ Discrimination
 - ☐ Embarrassed (and/or stigma)
 - ☐ Other, please list: _____
- 6.) Do you believe that the majority of people in Dunn County have access to Tobacco/Nicotine Use resources when needed?

- ☐ Yes
- ☐ No
- ☐ Unsure

- 7.) What areas of Tobacco/Nicotine Use education would you benefit from? Please select all that apply.
- ☐ The health risks related to the use of tobacco/nicotine products
 - ☐ The health risks related to the use of E-cigs/Vaporizers
 - ☐ The health risks of tobacco/nicotine/E-cigs use during pregnancy
 - ☐ Resources that can provide help
 - ☐ How to talk to a loved one about their tobacco/nicotine use
 - ☐ The availability of patches and prescription drugs to help quit
 - ☐ Other, please list: _____

OPTIONAL: In your experience, why do you think there is a Tobacco/Nicotine Use problem in your community? Please share below.

OPTIONAL: From your perspective, what are some solutions for fixing the Tobacco/Nicotine Use problem in your community? Please share below.

Health Area: Chronic Disease

Chronic Disease involves illnesses that last a long time, usually cannot be cured, and often result in disability. It includes health concerns such as arthritis, cancer, diabetes, high blood pressure, chronic obstructive pulmonary disease (COPD) and obesity.

- 1.) This issue negatively affects me/someone close to me.
Please select one: ☐ Yes ☐ No
- 2.) Do you believe access to Chronic Disease prevention and management resources (medical care, rehabilitation services, educational classes, local support groups, etc.) is a strength or a weakness in Dunn County?
 - ☐ Major Weakness
 - ☐ Moderate Weakness
 - ☐ Neutral
(If checked, skip to next health area: Mental Health)
 - ☐ Moderate Strength
(If checked, skip to next health area: Mental Health)
 - ☐ Major Strength
(If checked, skip to next health area: Mental Health)
 - ☐ Not enough Info
(If checked, skip to next health area: Mental Health)
- 3.) Have you tried to access Chronic Disease resources in Dunn County in the past three years?
 - ☐ Yes
 - ☐ No (If no, skip to question 6)
- 4.) Were you able to access resources you were seeking?
 - ☐ Yes (If yes, skip to question 6)
 - ☐ No
- 5.) If no, what were your barriers to accessing Chronic Disease resources? Please select all that apply.
 - ☐ Time
 - ☐ Money
 - ☐ Availability

- ☐ Transportation
- ☐ Not a priority to me
- ☐ Discrimination
- ☐ Embarrassed (and/or stigma)
- ☐ Other, please list: _____

6.) Do you believe that the majority of people in Dunn County have access to Chronic Disease resources when needed?

- ☐ Yes
- ☐ No
- ☐ Unsure

7.) What areas of Chronic Disease education would you benefit from? Please select all that apply.

- ☐ Childhood obesity prevention and treatment services
- ☐ Chronic disease self-management classes
- ☐ Diabetes prevention and self-management classes
- ☐ Free or low cost chronic disease health screenings
- ☐ Free or low cost weight management programs
- ☐ Healthy food options at community events
- ☐ Other: _____

OPTIONAL: In your experience, what are the reasons for the lack of access to Chronic Disease resources in your community? Please share below.

OPTIONAL: From your perspective, what are some solutions for increasing access to Chronic Disease resources in your community? Please share below.

Health Area: Mental Health

Mental health focuses on achieving and maintaining a healthy mental outlook. It includes services and support to guide how we think, act, and feel as we handle stress, relate to others, and make choices. This can include depression, anxiety, PTSD, self-harm, and suicide.

1.) This issue negatively affects me/someone close to me.

Please select one: ☐ Yes ☐ No

2.) Do you believe access to Mental Health resources (such as qualified providers, treatment options, local support groups) is a strength or a weakness in Dunn County?

- ☐ Major Weakness
- ☐ Moderate Weakness
- ☐ Neutral

(If checked, skip to next health area: Oral Health)

- ☐ Moderate Strength

(If checked, skip to next health area: Oral Health)

- ☐ Major Strength

(If checked, skip to next health area: Oral Health)

- ☐ Not enough Info

(If checked, skip to next health area: Oral Health)

3.) Have you tried to access Mental Health resources in Dunn County in the past three years?

- ☐ Yes
- ☐ No (If no, skip to question 6)

4.) Were you able to access resources you were seeking?

- ☐ Yes (If yes, skip to question 6)
- ☐ No

5.) If no, what were your barriers to accessing Mental Health resources? Please select all that apply.

- ☐ Time
- ☐ Money
- ☐ Availability
- ☐ Transportation
- ☐ Not a priority to me
- ☐ Discrimination
- ☐ Embarrassed (and/or stigma)
- ☐ Other, please list: _____

6.) Do you believe that the majority of people in Dunn County have access to Mental Health resources when needed?

- ☐ Yes
- ☐ No
- ☐ Unsure

7.) What areas of Mental Health education would you benefit from? Please select all that apply.

- ☐ Available mental health resources in the community
- ☐ How to treat or prevent mental health issues
- ☐ How to reduce or prevent self-harm and/or suicide
- ☐ How to deal with a mental health emergency
- ☐ How to talk about mental health issues with others
- ☐ Other, please list: _____

OPTIONAL: In your experience, what are the reasons for the lack of access to Mental Health resources in your community? Please share below.

OPTIONAL: From your perspective, what are some solutions to increase access to Mental Health resources in your community? Please share below.

Health Area: Oral Health

Oral Health focuses on keeping teeth, gums and mouth healthy. Topics include:

- Flossing
- Brushing
- Regular check-ups at the dentist (every 6 months)
- Fluoride supplements

1.) This issue negatively affects me/someone close to me. Please select one: ☐ Yes ☐ No

2.) Do you believe access to Oral Health care is a strength or a weakness in your community?

- ☐ Major Weakness
- ☐ Moderate Weakness
- ☐ Neutral (If checked, skip to next health area: Serious Infections)
- ☐ Moderate Strength (If checked, skip to next health area: Serious Infections)
- ☐ Major Strength (If checked, skip to next health area: Serious Infections)
- ☐ Not enough Info (If checked, skip to next health area: Serious Infections)

3.) Have you had any problems accessing Oral Health care in Dunn County in the last three years?

- ☐ Yes
- ☐ No (If no, skip to question 5)

4.) If yes, what were your barriers to accessing Oral Health care? Please select all that apply.

- ☐ Time

- ☐ Money
- ☐ Transportation
- ☐ Availability
- ☐ Not a priority for me
- ☐ Do not have insurance
- ☐ Local dental care providers do not accept BadgerCare/Medicare
- ☐ Other, please list: _____

5.) Do you believe that the majority of people in Dunn County have access to Oral Health care when needed?

- ☐ Yes
- ☐ No
- ☐ Unsure

6.) What areas of Oral Health care education would you benefit from? Please select all that apply.

- ☐ The importance of daily brushing/flossing
- ☐ A list of local dental care providers that accept BadgerCare/Medicare
- ☐ What's fluoride and why is it added to drinking water
- ☐ How oral health affects overall health
- ☐ The impact of foods & drinks on oral health
- ☐ Well water testing for fluoride
- ☐ Other, please list: _____

OPTIONAL: In your experience, what are the reasons for the lack of access to Oral Health care in your community? Please share below.

OPTIONAL: From your perspective, what are some solutions for increasing access to Oral Health care in your community? Please share below

Health Area: Serious Infections

Serious infections are sicknesses that you can catch from other people, bugs, animals or food. They can be passed from person to person or animal to person. This health area also includes ways to prevent and stop the spread of these infections. It includes getting sick from germs that cause:

- Influenza
- Measles
- Food poisoning
- Whooping cough
- Rabies

1.) This issue negatively affects me/someone close to me.

Please select one: ☐ Yes ☐ No

2.) Do you believe Serious Infection prevention and control is a strength or a weakness in Dunn County?

- ☐ Major Weakness
- ☐ Moderate Weakness
- ☐ Neutral
(If checked, skip to next health area: Family Health)
- ☐ Moderate Strength
(If checked, skip to next health area: Family Health)
- ☐ Major Strength
(If checked, skip to next health area: Family Health)
- ☐ Not enough Info
(If checked, skip to next health area: Family Health)

3.) Have you had any problems accessing Serious Infection prevention and control resources in Dunn County in the last three years?

- ☐ Yes
- ☐ No (If no, skip to question 5)

4.) If yes, what were your barriers to accessing Serious Infection prevention and control resources in Dunn County? Please select all that apply.

- ☐ Time
- ☐ Money
- ☐ Availability
- ☐ Transportation
- ☐ Not a priority to me
- ☐ Discrimination
- ☐ Embarrassed (and/or stigma)
- ☐ Other, please list: _____

5.) Do you believe that the majority of people in Dunn County have access to Serious Infections prevention and control resources when needed?

- ☐ Yes
- ☐ No
- ☐ Unsure

6.) What areas of Serious Infection prevention and control education would you benefit from? Please select all that apply.

- ☐ Immunizations/shots
- ☐ Personal hygiene
- ☐ When to stay home from work
- ☐ Safely preparing and serving food
- ☐ Pet vaccinations
- ☐ Other, please list: _____

OPTIONAL: In your experience, what are the reasons for the lack of access to Serious Infection prevention and control resources in your community? Please share below.

OPTIONAL: From your perspective, what are some solutions to increasing access to Serious Infection prevention and control resources in your community? Please share below.

Health Area: Family Health

Family Health focuses on relationships between family members which may impact one's physical, mental, and emotional health. Family Health includes:

- Family relationships and isolation
- Preventative health care (i.e. regular check-ups)
- Information on human growth and development
- Adapting well when something bad happens (also known as resilience)
- Child and elder care

1.) This issue negatively affects me/someone close to me.

Please select one: ☐ Yes ☐ No

2.) Do you believe access to Family Health resources is a strength or a weakness in Dunn County?

- ☐ Major Weakness
- ☐ Moderate Weakness
- ☐ Neutral (If checked, skip to next health area: Healthy Environment)
- ☐ Moderate Strength (If checked, skip to next health area: Healthy Environment)
- ☐ Major Strength (If checked, skip to next health area: Healthy Environment)

- ☐ Not enough Info (If checked, skip to next health area: Healthy Environment)
- 3.) Have you had any problems accessing Family Health resources in Dunn County in the last three years?
- ☐ Yes
- ☐ No (If no, skip to question 5)
- 4.) If yes, what were your barriers to accessing Family Health resources in Dunn County? Please select all that apply.
- ☐ Time
- ☐ Money
- ☐ Transportation
- ☐ Not a priority to me
- ☐ Discrimination
- ☐ Embarrassed (and/or stigma)
- ☐ Other, please list: _____
- 5.) Do you believe that the majority of people in Dunn County have access to Family Health resources when needed?
- ☐ Yes
- ☐ No
- ☐ Unsure
- 6.) What areas of Family Health education would you benefit from? Please select all that apply.
- ☐ How to cope when bad things happen to you
- ☐ Normal child growth and development
- ☐ Where to go for affordable healthcare coverage
- ☐ Prenatal Education
- ☐ Resources for child care
- ☐ Resources for elder care
- ☐ Other, please list: _____

OPTIONAL: In your experience, what are the reasons for the lack of access to Family Health resources in your community? Please share below.

OPTIONAL: From your perspective, what are some solutions to increasing access to Family Health resources in your community? Please share below.

Health Area: Healthy Environment

Healthy Environment focuses on the things in our water, air and food that can make us sick. Topics include:

- Safe drinking water from personal wells or city taps
- Safe lakes and rivers for recreation
- Clean air to breathe
- Raw and prepared foods that are safe to eat

- 1.) This issue negatively affects me or someone close to me. Please select one: ☐ Yes ☐ No
- 2.) Do you believe access to a Healthy Environment is a strength or a weakness in Dunn County?
- ☐ Major Weakness
- ☐ Moderate Weakness
- ☐ Neutral
(If checked, skip to next health area: Community Safety)
- ☐ Moderate Strength
(If checked, skip to next health area: Community Safety)
- ☐ Major Strength
(If checked, skip to next health area: Community Safety)
- ☐ Not enough Info
(If checked, skip to next health area: Community Safety)

- 3.) Overall, do you believe Dunn County has a Healthy Environment?
- ☐ Yes (If yes, skip to question 5)
- ☐ No
- 4.) If no, what makes Dunn County an Unhealthy Environment? Please select all that apply.
- ☐ Unsafe drinking water
- ☐ Unsafe lakes and rivers
- ☐ Poor air quality
- ☐ Poor/Unsafe food quality
- ☐ Other, please list: _____
- 5.) Do you believe that the majority of people in Dunn County live in a Healthy Environment?
- ☐ Yes
- ☐ No
- ☐ Unsure
- 6.) What areas of Healthy Environment education would you benefit from? Please select all that apply.
- ☐ Water/well testing
- ☐ Environmentally friendly chemical application practices
- ☐ Air quality standards
- ☐ Safe water recreation
- ☐ Raw and prepared foods that are safe to eat
- ☐ Other, please list: _____

OPTIONAL: In your experience, what are the reasons for the lack of a Healthy Environment in your community? Please share below.

OPTIONAL: From your perspective, what are some solutions to increasing a Healthy Environment in your community? Please share below.

Health Area: Community Safety

Community Safety focuses on preventing harm from injuries or violence at home, work, school or on the road. Topics include:

- Physical injuries due to slips, falls and other accidents
- Outdoor recreation
- Water safety
- Poisoning
- Car accidents
- Abuse in the home
- Crime

- 1.) This issue negatively affects me or someone close to me. Please select one: ☐ Yes ☐ No
- 2.) Do you believe that Community Safety is a strength or weakness in Dunn County?
- ☐ Major Weakness
- ☐ Moderate Weakness
- ☐ Neutral
(If checked, skip to next health area: Health at Work)
- ☐ Moderate Strength
(If checked, skip to next health area: Health at Work)
- ☐ Major Strength
(If checked, skip to next health area: Health at Work)
- ☐ Not enough Info
(If checked, skip to next health area: Health at Work)

- 3.) Have you had any problems with Community Safety in Dunn County in the last three years?
- ☐ Yes
- ☐ No (If no, skip to question 5)
- 4.) If yes, what are some reasons for a lack of Community Safety in Dunn County? Please select all that apply.
- ☐ Unsafe walkways/roadways
- ☐ Crime
- ☐ Not enough police
- ☐ Abuse in the home
- ☐ Weapon-related concerns
- ☐ Drug and/or alcohol related concerns
- ☐ Other, please list: _____
- 5.) Do you believe that the majority of people in Dunn County feel safe in the community?
- ☐ Yes
- ☐ No
- ☐ Unsure
- 6.) What areas of Community Safety education would you benefit from? Please select all that apply.
- ☐ How to start a neighborhood watch
- ☐ Weapon safety (bow/crossbow/gun)
- ☐ Help for getting out of a dangerous relationship
- ☐ Recreational Safety
- ☐ Drowning prevention
- ☐ Other, please list: _____

OPTIONAL: In your experience, what are the reasons for the lack of Community Safety in your community? Please share below.

OPTIONAL: From your perspective, what are some solutions to increasing Community Safety in your community? Please share below.

Health Area: Health at Work

Health at work focuses on preventing illnesses and injuries from workplace hazards. Topics include:

- Exposure to chemicals or radiation
- Exposure to infection
- Overuse injuries
- Unsafe work practices or tools

- 1.) This issue negatively affects me or someone close to me. Please select one: ☐ Yes ☐ No
- 2.) Do you believe Health at Work is a strength or weakness in Dunn County?
- ☐ Major Weakness
- ☐ Moderate Weakness
- ☐ Neutral
- (If checked, skip to next health area: Social Support)
- ☐ Moderate Strength
- (If checked, skip to next health area: Social Support))
- ☐ Major Strength
- (If checked, skip to next health area: Social Support))
- ☐ Not enough Info
- (If checked, skip to next health area: Social Support)
- 3.) Have you had any issues with Health at Work in Dunn County in the past three years?
- ☐ Yes
- ☐ No (If no, skip to question 5)

- 4.) If yes, what were your Health at Work issues? Please select all that apply.
- ☐ Exposure to chemicals or radiation
- ☐ Exposure to infection
- ☐ Overuse injuries
- ☐ Unsafe work practices or tools
- ☐ Scheduled to work too many hours
- ☐ Other, please list: _____
- 5.) Do you believe that the majority of people in Dunn County have a Healthy Work environment?
- ☐ Yes
- ☐ No
- ☐ Unsure
- 6.) What areas of Health at Work education would you benefit from? Please select all that apply.
- ☐ Ergonomics (work station) and injury prevention
- ☐ Harassment prevention and management education
- ☐ Mental health and/or substance abuse supports
- ☐ Stress management tools
- ☐ Tobacco cessation support
- ☐ Workplace safety training
- ☐ Workers' rights
- ☐ Other please explain: _____

OPTIONAL: In your experience, what are the reasons for the lack of Healthy Work environments in your community? Please share below.

OPTIONAL: From your perspective, what are some solutions for increasing the number of Healthy Work environments in your community? Please share below.

Health Area: Social Support

Social Support focuses on creating and preserving positive community connections which can lead to improved community relations and better access to resources. Topics include:

- Volunteerism
- Community groups or activities (i.e.. Faith-based organizations, Lions Club, Rotary, etc.)

- 1.) This issue negatively affects me or someone close to me. Please select one: ☐ Yes ☐ No
- 2.) Do you believe access to Social Support activities is a strength or a weakness in Dunn County?
- ☐ Major Weakness
- ☐ Moderate Weakness
- ☐ Neutral (If checked, skip to next health area: Safe and Quality Housing)
- ☐ Moderate Strength (If checked, skip to next health area: Safe and Quality Housing)
- ☐ Major Strength (If checked, skip to next health area: Safe and Quality Housing)
- ☐ Not enough Info (If checked, skip to next health area: Safe and Quality Housing)
- 3.) Have you had any problems accessing Social Support resources (community groups and activities, volunteer organizations, etc.) in Dunn County in the last three years?
- ☐ Yes
- ☐ No (If no, skip to question 5)

- 4.) If yes, what were your barriers to accessing Social Support resources in Dunn County? Please select all that apply.
- ☐ Time
 - ☐ Money
 - ☐ Availability
 - ☐ Transportation
 - ☐ Not a priority to me
 - ☐ Discrimination
 - ☐ A lack of groups/organizations I am interested in joining
 - ☐ Other, please list: _____

- 5.) Do you believe that the majority of people in Dunn County have access to Social Support resources when needed?
- ☐ Yes
 - ☐ No
 - ☐ Unsure

- 6.) What types of Social Support information would you benefit from? Please select all that apply.
- ☐ Local community service organizations
 - ☐ Local faith-based organizations
 - ☐ Local community clubs
 - ☐ Local volunteer opportunities
 - ☐ Mental/physical health benefits associated with Social Support
 - ☐ Other, please list: _____

OPTIONAL: In your experience, what are the reasons for the lack of access to Social Support resources in your community? Please share below.

OPTIONAL: From your perspective, what are some solutions for increasing access to Social Support resources in your community? Please share below.

Health Area: Safe and Quality Housing

Safe and quality housing focuses on affordable housing that can protect us from extreme weather and provide safe environments for families and individuals to live, learn, grow, and form social bonds.

- 1.) This issue negatively affects me or someone close to me. Please select one: ☐ Yes ☐ No
- 2.) Do you believe access to Safe and Quality Housing is a strength or a weakness in Dunn County?
- ☐ Major Weakness
 - ☐ Moderate Weakness
 - ☐ Neutral
(If checked, skip to next health area: Transportation)
 - ☐ Moderate Strength
(If checked, skip to next health area: Transportation)
 - ☐ Major Strength
(If checked, skip to next health area: Transportation)
 - ☐ Not enough Info
(If checked, skip to next health area: Transportation)
- 3.) Have you had any problems accessing Safe and Quality Housing in the last three years?
- ☐ Yes
 - ☐ No (If no, skip to question 5)
- 4.) If yes, what were your barriers to accessing Safe and Quality Housing? Please select all that apply.
- ☐ Time
 - ☐ Money

- ☐ Availability
- ☐ Transportation
- ☐ Not a priority to me
- ☐ Discrimination
- ☐ Other, please list: _____

- 5.) Do you believe that the majority of people in Dunn County have access to Safe and Quality Housing when needed?
- ☐ Yes
 - ☐ No
 - ☐ Unsure

- 6.) What areas of Safe and Quality Housing education would you benefit from? Please select all that apply.
- ☐ Low income housing options
 - ☐ Programs/resources for saving money on heating/cooling costs (weatherization)
 - ☐ Health and structural safety inspections (mold, lead paint, insect infestation, etc.)
 - ☐ Knowing your renters' rights
 - ☐ Resources for landlords
 - ☐ Other, please list: _____

OPTIONAL: In your experience, what are the reasons for the lack of access to Safe and Quality Housing in your community? Please share below.

OPTIONAL: From your perspective, what are some solutions for increasing access to Safe and Quality Housing in your community? Please share below.

Health Area: Transportation

Transportation focuses on having access to reliable transportation (owned, shared, or public) to get people to where they need to go, when they need to get there.

- 1.) This issue negatively affects me or someone close to me. Please select one: ☐ Yes ☐ No
- 2.) Do you believe access to reliable Transportation is a strength or a weakness in Dunn County?
- ☐ Major Weakness
 - ☐ Moderate Weakness
 - ☐ Neutral (If checked, skip to next section: Demographics)
 - ☐ Moderate Strength
(If checked, skip to next section: Demographics)
 - ☐ Major Strength
(If checked, skip to next section: Demographics)
 - ☐ Not enough Info
(If checked, skip to next section: Demographics)
- 3.) Have you had any problems accessing reliable Transportation (owned, shared or public) in Dunn County in the last three years?
- ☐ Yes
 - ☐ No (If no, skip to question 5)
- 4.) If yes, what were your barriers to accessing reliable Transportation (owned, shared, or public) in Dunn County?
- ☐ Time
 - ☐ Money
 - ☐ Availability
 - ☐ Not a priority to me
 - ☐ Discrimination
 - ☐ Embarrassed (and/or stigma)
 - ☐ Other, please list: _____

- 5.) Do you believe that the majority of people in Dunn County have access to reliable Transportation (owned, shared, or public)?
- ☐ Yes
- ☐ No
- ☐ Unsure
- 6.) What areas of reliable Transportation education would you benefit from? Please select all that apply.
- ☐ Basic car care
- ☐ Public transit options
- ☐ Gas money assistance
- ☐ Safe biking routes
- ☐ Ride sharing
- ☐ Other, please list: _____
- 7.) Have you used the public bus system in Dunn County?
- ☐ Yes
- ☐ No, I have not needed to use public transportation.
- ☐ No, I'm not aware of public transport in Dunn County.
- ☐ No, the public transportation did not arrive/depart when I needed it to.
- ☐ No, I did not feel safe using public transportation.
- ☐ No, the public transportation did not go where I needed to go. Location: _____

OPTIONAL: In your experience, what are the reasons for the lack of access to reliable Transportation (owned, shared, or public) in your community? Please share below.

OPTIONAL: From your perspective, what are some solutions to increasing access to reliable Transportation (owned, shared, or public) in your community? Please share below.

Section: Demographics

Congratulations! You are almost done with the survey! Please take the last few moments to complete a few demographic questions. As a reminder, all of your responses are confidential and will not be linked back to you.

What is your gender? Please check one.

- ☐ Male
- ☐ Female
- ☐ Non-Binary or Third Gender
- ☐ I self describe as: _____
- ☐ Prefer not to say

Which category below includes your age?

- ☐ 18 - 24
- ☐ 25 - 34
- ☐ 35 - 44
- ☐ 45 - 54
- ☐ 55 - 64
- ☐ 65 - 74
- ☐ 75 or older

Race & Ethnicity; I identify as: *(Please select all that apply)*

- ☐ Asian
- ☐ Black/African
- ☐ Caucasian/White
- ☐ Hispanic/Latinx
- ☐ Native American
- ☐ Native Hawaiian or Pacific Islander
- ☐ Prefer not to answer
- ☐ I identify as: _____

What is the highest level of school you have completed or the highest degree you have received?

- ☐ Less than high school degree
- ☐ High school degree or equivalent (e.g., GED)
- ☐ Some college but no degree
- ☐ Associate degree
- ☐ Bachelor's degree
- ☐ Graduate degree (Master's, Ph. D., M.D., etc.)
- ☐ Prefer not to answer.

Estimated household income. How much total combined money did all members of your household earn in 2018?

- ☐ \$0 - \$9,999
- ☐ \$10,000 - \$19,999
- ☐ \$20,000 - \$29,999
- ☐ \$30,000 - \$39,999
- ☐ \$40,000 - \$49,999
- ☐ \$50,000 - \$59,999
- ☐ \$60,000 - \$69,999
- ☐ \$70,000 - \$79,999
- ☐ \$80,000 - \$89,999
- ☐ \$90,000 - \$99,999
- ☐ \$100,000 or more
- ☐ Prefer not to answer

Number of People in Household: _____

Do you have medical insurance?

- ☐ Yes
- ☐ No
- ☐ Unsure
- ☐ Prefer not to say

Do you consider yourself to have a Disability/Different Ability?

- ☐ Yes
- ☐ No
- ☐ Prefer not to say

This space is for you to share anything else you would like to.

Thank you for taking the time to fill out our survey!

Final survey results were shared at a community event on July 16th, 2019 on UW-Stout's Campus, look for the next community event with the results of 2022's survey!

If you are interested in any of the following:

- Learning about volunteer opportunities in Dunn County.
- Being added to our email list so we can alert you of new educational opportunities in the area.

Please go to this link so we can connect with you:

<https://tinyurl.com/DunnConnect>

If you have any questions or concerns about the survey, please contact one of the following Dunn County Health Needs Assessment Committee members:

Stephanie Hintz of the Extension Dunn County
smhintz@co.dunn.wi.us | 715-232-1636

Tyler Jackels of the United Way of Dunn County
volunteer@uwaydunn.org | 715-231-3066

Once survey is completed, please return it prior to April 1st at 4:30pm to either the location you picked it up, Dunn County Public Health, or Dunn County UW-Extension (3001 US Highway 12 East, Suite 102, Menomonie, WI 54751)

APPENDIX B

THE COMMUNITY'S
CONCERNS & SOLUTIONS
FOR EACH HEALTH AREA

MENTAL HEALTH

COMMUNITY CONCERNS

CONCERN	DESCRIPTION	SURVEY RESPONSES
LACK OF PROVIDERS	There is a lack of mental healthcare providers in Dunn County	<ul style="list-style-type: none"> › Lack of PhD or MD level specialists in mental illness, particularly children. Lack of crisis care. Lack of respite care. › There are few mental health providers that work with youth.
LACK OF ACCESS	Dunn County residents are unable to access mental health services due to high costs and/or problems with insurance coverage	<ul style="list-style-type: none"> › We have great services available but they are not affordable. › It seems that if you do not have the correct insurance they only help you short term and if you need more help than is allowed by insurance you have to pay out of pocket.
WAITING LISTS	Dunn County residents with access to mental health providers are unable to get timely treatment due to long waiting lists	<ul style="list-style-type: none"> › Waiting lists are too long to see a counselor or psychiatrist and only available during normal business hours. People in need often cannot wait over 30 days to see a specialist. › Long wait time for appointments.
STIGMA	Many people do not accept or have a negative perception of those who suffer from mental health problems.	<ul style="list-style-type: none"> › Stigma around mental health has caused a lack of resources. › For average people who work and do not qualify for any asst. counseling can be very expensive.
LACK OF EDUCATION	Dunn County residents don't fully understand mental health issues and need to be educated about them.	<ul style="list-style-type: none"> › There needs to be more education on how to deal with negative feelings, impulsive thoughts and depression. › Available resources are not promoted/publicized/common.
LACK OF FUNDING	There is a lack of funding allocated to mental health	<ul style="list-style-type: none"> › Not enough funding state or government › Size of community, funding
NOT TAKEN SERIOUS	Mental health is not viewed as a serious problem in Dunn County.	<ul style="list-style-type: none"> › Not enough professionals that take this issue seriously › Lack of concern by those who should provide the services
LACK OF TIME	Some Dunn County residents struggle to find time in their schedules to seek mental health treatment.	<ul style="list-style-type: none"> › Time to travel, time away from work › Time availability
DENIAL	Individuals struggling with mental health either don't think they have a problem or are unwilling to seek help.	<ul style="list-style-type: none"> › Denial of mental health issue (not believe they have a disease) › People with mental health issues don't want to seek help.
TRANSPORTATION	Transportation to and from mental health services is a barrier for Dunn County residents	<ul style="list-style-type: none"> › I started having to go to Eau Claire because the wait to get an appt. was quite long in Dunn County. Planning around work days was difficult because drive time had to be factored in.
OTHER	Comments from survey participants that didn't fit to specific concerns.	<ul style="list-style-type: none"> › This is an enormous issue with youth and college age people › The flood of drug addiction affects many people's mental health

MENTAL HEALTH

COMMUNITY SOLUTIONS

GOAL	DESCRIPTION	RESPONDENT SUGGESTIONS
INCREASE PROVIDERS & PROVIDER AVAILABILITY	Dunn County needs more providers to meet the needs of residents as well as increased hours of availability.	<ul style="list-style-type: none"> › Bring mental health services to smaller towns and villages; may increase access. › Weekend availability with mental health professionals.
EDUCATE THE PUBLIC	Dunn County residents need to be educated on types of mental health disorders, and available resources.	<ul style="list-style-type: none"> › Education for local law enforcement, schools, and community to mental health issues in children. › More awareness to community of mental health issues and their affect.
MAKE SERVICES FREE OR MORE ACCESSIBLE	Many Dunn County residents would benefit from an increase in free or reduced cost mental health services.	<ul style="list-style-type: none"> › Free or reduced counseling should be offered through the county or employers. Insurance companies should provide fair coverage for mental health treatment costs.
INCREASE FUNDING	Dunn County residents would like more funding to be allocated to mental health.	<ul style="list-style-type: none"> › More funding for real mental help outside of substance abuse. › Allow funding to support access, to support training, education, facilities designated for mental health
INCREASE PREVENTATIVE SERVICES/EDUCATION	Dunn County would benefit from an increased emphasis on preventative services/education in order to address mental health issues before they become serious/life-threatening.	<ul style="list-style-type: none"> › Continue mental health first aid classes, expand to high school age kids. › Identify and treat children who are struggling in school, are prone to suicide and to limit bullying › Focusing more on how we can help people avoid needing access to mental health.
DECREASE STIGMA	Dunn County residents would like to see more acceptance of mental illness in order to reduce stigma.	<ul style="list-style-type: none"> › Education on reducing mental health stigma, encouraging people to speak up about mental health. › Awareness campaign about mental health to reduce stigma.
INCREASE NUMBER OF SUPPORT GROUPS	Dunn County lacks support groups to help those suffering from mental health issues and their family.	<ul style="list-style-type: none"> › Increase support group options in Dunn County. › Group sessions weekly should be provided. Something like AA. › Group mental health and stress management focus groups.
INCREASED RESOURCES BEDS, HELPLINES, ETC.	Dunn County residents would benefit from increased mental health services	<ul style="list-style-type: none"> › More beds availability for inpatient treatment. › 24-7 call line, 24-7 on call Drs., more help in schools, work places, etc.
INCREASE PAY FOR MENTAL HEALTH PROVIDERS	In order to attract more mental health professionals to Dunn County, there should be an increased incentives.	<ul style="list-style-type: none"> › Pay higher salaries to therapists and doctors to work in Menomonie. It's hard to attract people here. Offer student loan reimbursement. › Assistance or support with starting a business in counseling
INCREASE COLLABORATION BETWEEN MENTAL HEALTH PROVIDERS/EDUCATORS	Residents would like more collaboration between local mental health providers and educators.	<ul style="list-style-type: none"> › It would be great to share best practices in a larger "bubble" rather than just isolating to just a few selected groups. › Combine our efforts with surrounding communities.
MENTAL HEALTH ISSUES NEED TO BE TAKEN SERIOUSLY	Residents feel that mental health issues are not taken seriously enough.	<ul style="list-style-type: none"> › More knowledge and concern for documented mental health needs. › It needs to become a priority even though reimbursement is low.
DECREASE WAIT LIST TIMES	Wait lists are exceedingly long at some mental health care facilities in Dunn County.	<ul style="list-style-type: none"> › Appointments to see someone were 3 months out, I sorted things out myself but it would have been great to be able to talk someone when I was struggling.

HEALTHY ENVIRONMENT

COMMUNITY CONCERNS

CONCERN	DESCRIPTION	SURVEY RESPONSES
UNSAFE WATER	The various bodies of water in Dunn County are potentially unsafe for recreational activities and contain hazardous bacteria including blue-green algae	<ul style="list-style-type: none"> › Our water is threatened, both for drinking, bathing, & recreation. We only have one aquifer, and activities like careless siting of CAFOs with their manure lagoons, sand mines, land spreading of septic waste, agri-chemicals, and rural homes too close together will result in deterioration of our groundwater and our aquifer.
POLLUTION FROM AG FERTILIZERS & FARMING	Unsafe farming practices in Dunn County are causing pollution to our bodies of water.	<ul style="list-style-type: none"> › Farmers within the watershed refuse to change or alter their practices to help clean up the water. › Phosphorus pollution. Poor regulation of farming runoff.
PRIORITIZING THE ENVIRONMENT	Improving the environment of Dunn County is not highly prioritized.	<ul style="list-style-type: none"> › Lack of priority, especially from the state legislature and former administration
LACK OF KNOWLEDGE & EDUCATION	Dunn County residents lack the knowledge & educational opportunities to successfully address unhealthy environmental issues	<ul style="list-style-type: none"> › Lack of education and exposure on things like the water quality state of Lake Menomin › There is a lack of education on things that are harmful to us. › Lack of signage and education about the dangers of blue-green algae.
UNSAFE DRINKING WATER	The tap water in Dunn County may be discolored and unsafe to drink for some residents.	<ul style="list-style-type: none"> › The water in my apartment is often yellow. › City tap water frequently is brown and reeks, the city water department just explains it's minerals and safe to drink.
UNSAFE SEPTIC TANK PRACTICES	Septic tanks are not always properly managed and installed. This may lead to septic waste being leaked.	<ul style="list-style-type: none"> › We still land-spread septic wastage, sometimes in risky places. › Careless septic tank contents distribution/application. › Failing or improperly installed septic systems.
UNSAFE WELL WATER	Well water in Dunn County sometimes contains potentially dangerous toxins including high levels of nitrates	<ul style="list-style-type: none"> › Big farms and chemical run off to personal wells. › We have very unsafe algae bloom in our lakes and waterways and I fear that our well water could have high nitrate and lead levels.
LACK OF FUNDING	There is not enough funding to address unhealthy issues affecting the environment in Dunn County	<ul style="list-style-type: none"> › Not enough designated funding to deal with the problems. › Lake Tainter and Lake Menomin issues are likely not able to be resolved due to lack of funding/prioritization.
AIR POLLUTION DUE TO ALGAE BLOOMS	Pollution and other health hazards resulting from algae blooms in Dunn County bodies of water.	<ul style="list-style-type: none"> › The algae blooms in the summer are a significant public health hazard. You can't swim in that water much of the year. It smells terrible all over town in July and August.
DIFFICULTIES IN TESTING WATER/SOIL QUALITY	Dunn County lacks the education and financial means to accurately test the quality of drinking water and soil.	<ul style="list-style-type: none"> › Hard to determine water quality in rural areas › Need more education and testing, as well as grants to help pay for water and soil testing.
POLLUTION FROM SAND & MINERAL MINING	Dunn County sand and mineral mines are a source of pollutants.	<ul style="list-style-type: none"> › There are many sand mines bordering the county line. › Air pollution from frack sand mines affects Dunn County residents.
UNENFORCED REGULATIONS	Environmental regulations not being enforced is negatively impacting the environment of Dunn County.	<ul style="list-style-type: none"> › We have not enforced existing regulations concerning water quality control. (nutrient management, erosion control, shoreline zoning, etc.). › Poor regulation of farm runoff
WATERSHED PROTECTION	The watersheds in Dunn County are not adequately protected.	<ul style="list-style-type: none"> › Have to find a way to clean the Red Cedar watershed › Red Cedar Watershed is unprotected from pollutants.

HEALTHY ENVIRONMENT

COMMUNITY SOLUTIONS

GOAL	DESCRIPTION	RESPONDENT SUGGESTIONS
RESTRICT WATER POLLUTANT SOURCES	There needs to be a reduction in the sources of run-off and other water pollutants in Dunn County.	<ul style="list-style-type: none"> › Stop pesticide and herbicide use as well as big manure pits › Put limits to nitrates and phosphates that farmers use. Plant more trees around fields to slow water run off etc.
CLEAN THE LAKES, RIVERS, AND STREAMS	Dunn County needs to do a better job of cleaning lakes, rivers and streams.	<ul style="list-style-type: none"> › Take care of the algae problem › Start focusing on cleaning the lakes in our area
MORE INFORMATION AND EDUCATION	Provide more education regarding healthy, sustainable environmental practices residents.	<ul style="list-style-type: none"> › Increased education for people in town about conservation practices and how fertilizing their lawns when not needed contributes to the green water in tainter and Menomin.
MAKE THE ENVIRONMENT A PRIORITY	Improving the health of the environment should be a higher priority in Dunn County.	<ul style="list-style-type: none"> › Long term commitment to education and changing practices › More support at state and federal levels of the work that TMLIA is working on to improve the Red Cedar Watershed
CREATE STRONGER LAWS	Stronger rules, laws, and regulations are needed to improve the environment of Dunn County	<ul style="list-style-type: none"> › More staff to check that people are following rules. Stronger environmental rules. › Harsher laws & enforcement in regards to the environment.
INCREASE COLLABORATION	Better collaboration between residents, farmers, companies, politicians, and UW-Stout, is needed to improve our environment.	<ul style="list-style-type: none"> › The community needs to work together to best utilize our resources. › I like what has been going on so far with the collaboration of the Stout students studying various aspects of cleaning up our lakes and the initiatives that have started.
MORE ACCESSIBLE TESTING KITS FOR WELL WATER	Decrease the cost and increase the availability of well water test kits in Dunn County.	<ul style="list-style-type: none"> › I would like access to free well testing and information on if well water and city water is safe for infants, children, and pregnant women to consume.
INCREASE FUNDING	More funding is needed to improve the environment in Dunn County.	<ul style="list-style-type: none"> › Additional funding and staff towards water quality improvement projects and community education of water quality problems
INCREASE MONITORING OF THE ENVIRONMENT	Increase the amount of air, water, soil testing done in Dunn County.	<ul style="list-style-type: none"> › Increased and more consistent air, water, and soil testing to pinpoint areas of agriculture runoff and mitigating
PROVIDE RADON TESTING/EDUCATION	Radon at home testing kits and education should be more readily available in Dunn County.	<ul style="list-style-type: none"> › Offer at home radon testing kits. › Educate people (especially realtors and home inspectors) about radon and the fact that it does affect homes in our area
MONITOR QUALITY OF TAP WATER	Dunn County tap water should be monitored more closely and better communicated to residents.	<ul style="list-style-type: none"> › Test city water more often and wider tests. › The quality of our drinking water needs to be improved. › Routinely monitoring/communicating drinking water quality.
DECREASE UNSAFE SEPTIC SYSTEM PRACTICES	Safer septic tanks and practices are needed in Dunn County.	<ul style="list-style-type: none"> › Mandate sewer, not septic systems in ALL new developments › Practice and implement proper waste management
BETTER ENFORCE CURRENT LAWS & REGULATIONS	Current laws, rules, and regulations for safe environmental practices need to be better enforced in Dunn County	<ul style="list-style-type: none"> › Better enforce water quality standards › Hold companies and others to pollution standards › Enforce all existing regulations that relate to water quality.
OTHER	Comments from survey participants that didn't fit to specific concerns.	<ul style="list-style-type: none"> › Encourage urban conservation so that people in the city don't just blame farmers for the issues with the lakes and groundwater. › Replace the aging pipes in the water system.

CHRONIC DISEASE

COMMUNITY CONCERNS

CONCERN	DESCRIPTION	SURVEY RESPONSES
LACK OF HEALTH CARE ACCESSIBILITY	There is a lack of health care accessibility when it comes to chronic disease treatment.	<ul style="list-style-type: none"> › Lack of education and affordable health insurance. › Lack of affordable health care options, alternatives to a doctor › Lack of universal health insurance
LACK OF INFORMATION AND EDUCATION	There is a lack of chronic disease information & education for residents	<ul style="list-style-type: none"> › Lack of understanding of what health, chronic disease is › Not enough people know how to access these resources
LACK OF LOCAL CHRONIC DISEASE FACILITIES	There is a lack of local facilities to treat chronic disease related issues, especially in rural areas	<ul style="list-style-type: none"> › Providers not knowledgeable enough on enough chronic illnesses. › We need a medical establishment that can actually help people who have chronic disease.
POOR DIETING AND EXERCISE HABITS	Poor diet and exercise habits contribute to chronic disease issues.	<ul style="list-style-type: none"> › Too many people are not interested in making life changes › People do not want to change or deal with the concern.
LACK OF FUNDING	There is a lack of funding for chronic disease related issues	<ul style="list-style-type: none"> › Our county is a rural area with minimal sustainable dollars to support stronger resources to come in and remain available.
OTHER	Comments from survey participants that didn't fit to specific concerns.	<ul style="list-style-type: none"> › Children and adults also sometimes need someone to hold them accountable and help them through weight loss and diet programs.

CHRONIC DISEASE

COMMUNITY SOLUTIONS

GOAL	DESCRIPTION	RESPONDENT SUGGESTIONS
INCREASE HEALTH CARE ACCESSIBILITY	Accessibility to health care services is necessary in order to better address chronic disease related issues	<ul style="list-style-type: none"> › Offer free screenings and provide affordable options for care and treatment and management for long term. › More transportation options/providers willing to travel & meet patients
INCREASED EDUCATION OPPORTUNITIES	There is a need to increase local education opportunities related to chronic disease	<ul style="list-style-type: none"> › Increase community education programs › Increased use of student resources at UW-Stout to share info. › More education for school-aged children
BETTER EXPOSURE OF INFO AND RESOURCES AVAILABLE	There needs to be an effort to increase the exposure of chronic disease related info & resources.	<ul style="list-style-type: none"> › Promote access at the free clinic › More sharing of resources that are available to the community. Posted on fliers and placed at places such as the dialysis clinic, the hospital, etc.
INCREASE ACCESSIBILITY TO EXISTING PROGRAMS	There is a need to increase the accessibility of fitness and weight loss programs in Dunn County	<ul style="list-style-type: none"> › Offer more classes on diabetes in day time hours for retired persons › Support groups weight loss initiatives and groups for rural areas › Free health coaching to those with chronic illness.
INCREASE FUNDING	More funding is needed to address local chronic health related issues	<ul style="list-style-type: none"> › More funding to support longer staff hours and grants / aid to those in need of treating a chronic illness.
HEALTHCARE FACILITIES	Increase the amount of chronic disease related health care facilities	<ul style="list-style-type: none"> › We need more than one free clinic that address specific chronic disease needs for Dunn County residents.
OTHER	Comments from survey participants that didn't fit to specific concerns.	<ul style="list-style-type: none"> › It seems that the elderly are overlooked in the county. › Medical providers should recommend/require follow-up treatment.

ALCOHOL, NICOTINE, AND DRUGS

COMMUNITY CONCERNS

CONCERN	DESCRIPTION	SURVEY RESPONSES
CULTURE OF DRINKING	Drinking is an accepted part of the county and state culture.	<ul style="list-style-type: none"> › The State of Wisconsin has historically had a binge drinking problem, it is a social norm. › It is culturally accepted in practically every activity.
LAWS ARE TOO LENIENT	Dunn County residents feel that local & state laws related to alcohol abuse, illegal drug possession, sales, and manufacturing are not strict enough.	<ul style="list-style-type: none"> › We are the last state where you don't lose your license on a first offense for drunk driving. › Alcohol and drugs are too accessible to teens. › Stricter laws regarding drug use/drug court.
COLLEGE DRINKING	The presence of a college in the county seems to lead to an increase in alcohol related issues in the nearby community.	<ul style="list-style-type: none"> › Binge drinking college students publicly having parties in residential areas, vomiting in public, laying in kiddie pools drinking while children are biking on the side walks etc. is disturbing and disgusting. › Way too much alcohol is promoted in this town.
EASY ACCESS	Alcohol is too easily accessible in Dunn County.	<ul style="list-style-type: none"> › Underage people have too much access to alcohol › Bars on Main Street that are easily accessible to Stout students and low income housing in the area create too much opportunity.
UNDERAGE DRINKING	Dunn County residents feel that underage drinking is common in our communities.	<ul style="list-style-type: none"> › Plenty of bars let minors in to drink › Alcohol abuse starts at a young age. It is a hobby that becomes a lifestyle.
POVERTY	Poverty may be a root cause of alcohol and substance abuse in Dunn County.	<ul style="list-style-type: none"> › Low Income jobs › Low Income Families
LACK OF RESOURCES AND TREATMENT OPTIONS	There are not enough treatment facilities & options within Dunn County	<ul style="list-style-type: none"> › Limited resources › Lack of treatment resources
DENIAL	People with alcohol abuse problems don't seek treatment because they don't think they have a problem.	<ul style="list-style-type: none"> › Those close to me who abuse alcohol have no desire to seek out help. They enjoy their lifestyle and see nothing wrong with it. › Easy to live with alcohol abuse issues.
STRESS/COPING	People turn to alcohol as a way of coping or relieving stress.	<ul style="list-style-type: none"> › Stress factors › It's how people try to cope
LACK OF EDUCATION	There is a lack of alcohol/drug abuse related education in Dunn County.	<ul style="list-style-type: none"> › Early offenders need help and education › Not enough education
PEOPLE CAN'T AFFORD TREATMENT	Many suffering from substance abuse are unable to afford treatment due to lack of insurance coverage/money.	<ul style="list-style-type: none"> › Treatment and prevention resources. › Many treatments/rehabs that exist are too expensive › Low income people cant afford rehab
LACK OF ALCOHOL FREE RECREATIONAL ACTIVITIES	There are not enough recreational activities in the area that are alcohol free.	<ul style="list-style-type: none"> › Not many popular alcohol-free community activities. › Rural community with little for people to do. People are more isolated, low income.
OTHER	Comments from survey participants that didn't fit to specific concerns.	<ul style="list-style-type: none"> › At least once a year, a community member or university student dies due to accidents or illness related to alcohol use.

ALCOHOL, NICOTINE, AND DRUGS

COMMUNITY SOLUTIONS

GOAL	DESCRIPTION	RESPONDENT SUGGESTIONS
MORE EDUCATION	More alcohol & drug related education is needed to inform people of the dangers of abuse and misuse	<ul style="list-style-type: none"> › More education on use of meth, opioids and how to prevent addiction. › Continued education on responsible use of alcohol, affects it has on families, and resources if available if abused.
MORE STRICT LAWS AND REGULATIONS	There needs to be more strict laws & penalties for alcohol abuse and the use/manufacturing of illegal drugs.	<ul style="list-style-type: none"> › More police contact with alcohol violations. › Criminalizing public drunkenness › Cracking down on the sellers of illegal drugs and imposing jail time
INCREASE TREATMENT FACILITIES & PROGRAMS	There is a need for more treatment facilities for substance abuse.	<ul style="list-style-type: none"> › More local rehabilitation programming. › We need to have more intake facilities.
MORE SUPPORT GROUPS	There is a need for more substance abuse support groups in Dunn County	<ul style="list-style-type: none"> › More options than just 12 step groups › Free support groups available 24/7
INCREASE COUNSELING RESOURCES	There should be more substance abuse related information, education, counseling, and resources available.	<ul style="list-style-type: none"> › Stout needs better substance abuse counseling and resources for their students. Student's poor choices impact the community as a whole long term.
REDUCE THE NUMBER OF THOSE IN POVERTY	Reducing the number of people in poverty may help reduce one of the root causes of substance abuse	<ul style="list-style-type: none"> › Identify contributing factors that lead to drug and alcohol problems for a community. Lack of good paying jobs and the education to qualify for them contributes to a larger impoverish population.
INCREASE COMMUNITY CONNECTIONS	There is a need for a more open, connected, community atmosphere in Dunn County	<ul style="list-style-type: none"> › Get local establishments to work with the community. › Social connection that doesn't rely on going to a bar or place that serves alcohol
REDUCE STIGMA	There is a need to reduce the stigma associated with substance abuse	<ul style="list-style-type: none"> › Stigma reduction and harm reduction practices are so important here. › Broad education regarding why people abuse to decrease stigma
POLICE PRESENCE	There needs to be an increased police presence in order to combat substance abuse related issues	<ul style="list-style-type: none"> › Drug task force with harder laws, they get arrested and are right back at it a week later › Increased law enforcement
TRANSITIONAL HOUSING AND TREATMENT	There is a need for transitional housing for those released from jail or treatment in Dunn County	<ul style="list-style-type: none"> › When people come out of jail or treatment they have little resources and can't find affordable housing. There needs to be a transition from jail/ shelters to community.
INCREASE MENTAL HEALTH RESOURCES	There is need for more mental health resources, which may reduce one of the root causes of substance abuse.	<ul style="list-style-type: none"> › Increase mental health resources › More mental health help and help for families who are faced with substance abuse.
PREVENT CHILDHOOD TRAUMA	An effort should be made to prevent childhood trauma from happening	<ul style="list-style-type: none"> › Substance abuse prevention starts with preventing childhood trauma so that we can prevent future abuse issues. Resources for children.
DECREASE THE AMOUNT OF DRUGS AVAILABLE	There is a need to decrease the amount of prescription drugs available	<ul style="list-style-type: none"> › There needs to be less prescribing of abusable medications. › Get opioids and other addictive prescriptions off the market.
OTHER	Comments from survey participants that didn't fit to specific concerns.	<ul style="list-style-type: none"> › Legalize marijuana and use the profit for drug rehab and education. › Create programming with better outcomes and more proven results.

SAFE & QUALITY HOUSING

COMMUNITY CONCERNS

CONCERN	DESCRIPTION	SURVEY RESPONSES
AFFORDABLE HOUSING	There is not enough affordable housing available in Dunn County.	<ul style="list-style-type: none"> › There is a lack of low income housing. › Shortage of housing most heavily impacts low income families
UNSAFE HOUSING	There is a lack of safe and quality housing in Dunn County.	<ul style="list-style-type: none"> › Many of the older homes are fire traps and justifiably unsafe. › lower cost rental units being run down and neglected by landlords
LANDLORD ISSUES	Some landlords in Dunn County are not properly maintaining rental properties.	<ul style="list-style-type: none"> › Many of the landlords who rent to students don't keep up their properties at all › Landlords offer deplorable rentals for students and low income families.
HOUSING TOO EXPENSIVE	The cost of renting or purchasing a home is too high for many Dunn County residents.	<ul style="list-style-type: none"> › Very expensive rentals › Rent is too high in our community › Expensive housing market.
POVERTY	Dunn County residents may not be able to afford housing due to low income.	<ul style="list-style-type: none"> › Rent to wage ratio is way off. › There aren't many options out there that are affordable for minimum wage workers or those that are just above the minimum wage.
RULES & REGULATIONS NOT ENFORCED	Local housing rules and regulations are not enforced in Dunn County.	<ul style="list-style-type: none"> › Owners have gotten away with violating ordinances for years. › Landlords aren't held liable according to laws for state of Wisconsin
DISCRIMINATION	Dunn County residents are unable to obtain housing due to discrimination.	<ul style="list-style-type: none"> › No assistance or second chances for those with a poor rental history. › lack of housing for people with felony convictions
HOUSING PRIORITIZED TO STOUT STUDENTS	UW-Stout students are prioritized over local residents when it comes to obtaining housing.	<ul style="list-style-type: none"> › All the housing in town is geared towards Stout students › Too many rental properties are intended for student rentals, and not enough on the families who live here.
LACK OF INFORMATION	Dunn County residents may not be aware of current information available to them to find affordable housing.	<ul style="list-style-type: none"> › Lack of wide spread information about finding adequate housing, › Lack of knowledge when it comes to where to find affordable housing options in Dunn County.
NOT ENOUGH SPECIALIZED HOUSING	There is a lack of housing available for seniors and those living with disabilities in Dunn County.	<ul style="list-style-type: none"> › Cost is an issue for the retired or those beginning to join the workforce. › Lack of housing access seems to be an issue with the working class and senior citizens.
HOMELESS SHELTERS	Lack of housing available for the homeless population in Dunn County.	<ul style="list-style-type: none"> › Insufficient resources for homeless persons › There are more homeless people in the area than we can accommodate.
RENTER'S RIGHTS	Not all Dunn County residents are aware of their rights as renters or how to file a housing related complaint.	<ul style="list-style-type: none"> › Need more education on renters rights and how to go about effectively filing complaints on unsafe issues › Many young renters do not know their rights and are manipulated.
OTHER	Comments from survey participants that didn't fit to specific concerns.	<ul style="list-style-type: none"> › Zoning issues. City Council won't accept new development. › Not enough housing options for those who get approved for low income housing assistance.

SAFE & QUALITY HOUSING

COMMUNITY SOLUTIONS

GOAL	DESCRIPTION	RESPONDENT SUGGESTIONS
BUILD MORE LOW INCOME HOUSING	There is a need for more low-income housing in Dunn County.	<ul style="list-style-type: none"> › New affordable housing projects › Build more low income housing.
HOUSING REGULATIONS	There needs to be more strict housing regulations, including an increase in the number of inspections.	<ul style="list-style-type: none"> › Create more strict standards and inspections of current rentals. › More strict punishments for landlords that continue to rent unsafe properties, as well as imposing regular inspections.
LOWER RENT	Dunn County residents would like there to be lower rent through rent control and subsidized housing	<ul style="list-style-type: none"> › Rent control so low income residents have access to decent housing. › Rent restriction, mandating that a property can only charge rent in accordance to the properties assessed value
RENTER'S RIGHTS EDUCATION	There is a need for renter's rights education and increased resources for renters in Dunn County.	<ul style="list-style-type: none"> › There should be more resources for renter's rights. Many houses are unsafe, but students feel like there isn't another option. › Advocacy for renters when landlords fail to provide safe, clean housing.
INCREASE NON-STUDENT HOUSING OPTIONS	Dunn County residents would like to see more housing options for non-students.	<ul style="list-style-type: none"> › Identify housing that is more appropriate for low income families vs transient college students › Increase availability of affordable rentals for families
EMERGENCY SHELTERS & TRANSITIONAL HOUSING	There needs to be more emergency shelters and transitional housing for those in need of temporary housing	<ul style="list-style-type: none"> › More emergency shelters › More safe shelters are needed. › Short term affordable housing
IMPROVE QUALITY OF LANDLORDS	Dunn County residents would like to see more quality local landlords by holding them accountable.	<ul style="list-style-type: none"> › Better landlord companies. I know Lancer Group is huge but they overcharge on rent on places that are literally falling apart. › There is a need for QUALITY landlords with QUALITY properties.
EDUCATE LANDLORDS	There is a need for more information, education, and resources for local landlords	<ul style="list-style-type: none"> › Programs to assist and educate future landlords to provide safe and quality property rentals. › Additional support and education for landlords
SHARED COMMUNITY SPACES	Dunn County residents would like to see an increase in shared community spaces.	<ul style="list-style-type: none"> › Expand cooperative development options (especially for senior citizens) › A planned community with shared garden beds, exercise, and community rooms.
OTHER	Comments from survey participants that didn't fit to specific concerns.	<ul style="list-style-type: none"> › Access to programs to help people improve their homes. › Having a governing body that students or landlords could go to when they have a problem would be great › Evaluating the true and long term effects that state legislation has on it's rural citizens BEFORE the regulations and laws are put into action.

APPENDIX C

CHNA ABBREVIATION DEFINITIONS

These are the definitions of the most common abbreviations used in our CHNA/CHIP report. You may come across abbreviations like this when reading other health and community related documents, so we provided these definitions to get you familiar!

ACS American Community Survey

AVR Analysis, Visualization & Reporting

BLS Bureau of Labor Statistics

BRFSS Behavioral Risk Factor Surveillance System

CDC Centers for Disease Control & Prevention

CHR County Health Rankings

DHS Wisconsin Department of Health Services

DPI Wisconsin Department of Public Instruction

EPA Environmental Protection Agency

FHS Wisconsin Family Health Survey

NCES National Center for Education Statistics

NCHHSTP National Center for HIV/AIDS, Viral Hepatitis, STD, and TB Prevention

NVSS National Vital Statistics System at the National Center for Health Statistics (CDC)

OJA Office of Justice Assistance

USDA United States Department of Agriculture

YRBS Youth Risk Behavioral Survey

APPENDIX D

HEALTH AREA RANKINGS

HEALTH AREA RANKINGS FROM CHNA 2019 SURVEY

Comparison to WI & National data in last two columns* -1 = Better / 0 = Same / 1 = Worse

HEALTH AREA	NEGATIVELY AFFECTS	PERCEIVED WEAKNESS	WI AVG. -1, 0, 1	NTL. AVG. -1, 0, 1
MENTAL HEALTH	63%	51%	-1	1
HEALTHY ENVIRONMENT	48%	47%	0	-1
CHRONIC DISEASE	66%	28%	-1	0
ALCOHOL ABUSE	41%	36%	0	-1
TOBACCO/NICOTINE USE	38%	27%	1	2
SAFE & QUALITY HOUSING	27%	46%	1	-1
FAMILY HEALTH	31%	25%	-3	3
HEALTHY NUTRITION	28%	30%	0	-2
SUBSTANCE ABUSE	27%	39%	-1	3
TRANSPORTATION	26%	44%	1	-1
ORAL HEALTH	29%	25%	2	-2
PHYSICAL ACTIVITY	31%	15%	N/A	N/A
COMMUNITY SAFETY	28%	21%	1	0
SERIOUS INFECTION	24%	13%	N/A	N/A
SEXUAL HEALTH	13%	19%	N/A	N/A
HEALTH AT WORK	17%	12%	N/A	N/A
SOCIAL SUPPORT	15%	12%	N/A	N/A

*The scores from indicators within the health area categories were totaled together to produce the final ranks (-1, 0, 1) listed.

APPENDIX E

COMMUNITY RESOURCE INVENTORY

| MENTAL HEALTH

ARBOR PLACE

715-235-4537

Substance abuse & mental health disorder treatment

BEACON MENTAL HEALTH RESOURCES

715-308-5742

Mental Health and Substance Use services

DUNN COUNTY HUMAN SERVICES

715-832-1678

Advocates for the health, safety, & welfare.

FAMILY THERAPY ASSOCIATES

715-246-4840

Provides counseling and therapy services

GIVING TREE COUNSELING & RES. CENTER

715-643-2445

Mental health therapy and resources.

HAPPY APPLE COUNSELING

happyappletherapy.com

Personalized counseling.

HERE NOW TO HELP

715-231-4373

Counseling services

KAYRES COUNSELING

715-231-2010

MARRIAGE & FAMILY HEALTH SERVICES

715-832-0238

Assessments and therapeutic services

MARSHFIELD CLINIC

715-233-6400

MATCH

715-552-1365

Mental Health Asst. for Teens & Children

MAYO CLINIC HEALTH SYSTEM

715-233-7891

THE BRIDGE

715-235-9074

24/7 access to services to help begin the healing process of abuse

NW COUNSELING & GUIDANCE CLINIC

715-235-4245

UW-STOUT COUNSELING CENTER

715-232-2468

Counseling for UW-Stout students

VANTAGE POINT

715-832-5454

Mental Health Counseling

| PEER SUPPORT

ALANO CLUB

menomoniealano.org

Meeting place for 12 Step Programs

MONARCH HOUSE PEER RUN RESPITE

715-505-5641 | milkweedalliance.org

Voluntary, non-medical overnight program for people who are experiencing mental health and substance use related crises.

PEER SUPPORT HOT-LINE

warmline.org

Free, nationwide peer-support services that provides resources, referrals and support.

MENTAL HEALTH PEER SUPPORT GROUP

ptsdcentral1010@gmail.com

Meetings to discuss mental health & resources.

| SUBSTANCE ABUSE

ARBOR PLACE

715-235-4537

Drug & Alcohol Abuse help, Mental Health Treatment

ALCOHOLICS ANONYMOUS

1-800-471-9876

Anonymous and secure hot-line

SOFT LANDING TRANSITION SERVICES

715-933-0103

Sober House

SOURCES/ REFERENCES

10 Reasons to Fluoridate Water Public Water
American Dental Assoc. (2013). Retrieved from
<https://www.ada.org/~media/ADA/Public%20Programs/Files/Fluoridation-Ten-Reasons-to-Fluoridate.pdf?la=en>

Adverse Childhood Experiences in WI 2011 –
2015. (May, 2018). Retrieved from
https://preventionboard.wi.gov/Documents/ACE-Brief_2018FINAL.pdf

Alcohol-Impaired Driving Among Adults –
United States. (August, 2015). Retrieved from
<https://www.cdc.gov/mmwr/preview/mmwrhtml/mm6430a2.htm>

Cigarette Smoking During Pregnancy: US, 2016.
Number 305. (February, 2018) Retrieved from
<https://www.cdc.gov/nchs/products/databriefs/db305.htm>

Child care costs in the United States. (2019,
July). Retrieved from
<https://www.epi.org/child-care-costs-in-the-united-states/>

Consolidated Planning/CHAS Data: HUD USER.
(August, 2019). Retrieved from
<https://www.huduser.gov/portal/datasets/cp.html>

County Health Rankings and Roadmaps (CHR).
(2020). Retrieved from
<https://www.countyhealthrankings.org/app/wisconsin/2019/rankings/dunn/county/outcomes/overall/snapshot>

Drug Overdose Deaths in the United States:
1999–2017. (November, 2018). Retrieved from
<https://www.cdc.gov/nchs/data/databriefs/db329-h.pdf>

Family Budget Calculator. Retrieved from
<https://www.epi.org/resources/budget/>

High School YRBS. (2019) Retrieved from
<https://nccd.cdc.gov/YouthOnline/App/Results.aspx?LID=WI>

OnTheMap. Retrieved from
<https://onthemap.ces.census.gov/>

Physical housing characteristics for occupied
housing units. Retrieved from
<https://data.census.gov/cedsci/table?q=vehicle+per+household>

Prevalence of Obesity among Adults & Youth:
2015–2016. (October, 2017) Retrieved from
<https://www.cdc.gov/nchs/data/databriefs/db288.pdf>

Smoking is down, but almost 38 million
American adults still smoke. (January, 2018).
Retrieved from

<https://www.cdc.gov/media/releases/2018/p0118-smoking-rates-declining.html>

Statewide Weight, Healthy Eating, and Physical
Activity Dashboard. (2018, January). Retrieved
from

<https://www.wihealthatlas.org/wmjindicators>

Thanks for helping us keep tobacco out of kids’
hands. (n.d.). Retrieved from
<http://www.wiwins.org/>

The prevalence of adverse childhood
experiences, nationally, by state, & by race/
ethnicity. (February, 2018). Retrieved from
<https://www.childtrends.org/publications/prevalence-adverse-childhood-experiences-nationally-state-race-ethnicity>

What’s in Your Water? A look at private
well water quality in Wisconsin. (July, 2017).
Retrieved from

<https://www.dhs.wisconsin.gov/publications/p01830.pdf>

Wisconsin Environmental Health Public Health
Data Tracker. (2017). Retrieved from
<https://dhsgis.wi.gov/DHS/EPHTracker/>

Wisconsin Epidemiological Profile on Alcohol and
Drugs, 2016. (November, 2016) Retrieved from
<https://www.dhs.wisconsin.gov/publications/p4/p45718-16.pdf>

WISH: Cancer Modules. (2019). Retrieved from
<https://www.dhs.wisconsin.gov/wish/cancer/index.htm>

